

Anti-Cd1d1 antibody



Catalog Number: 175314

Product name

Anti-Cd1d1 antibody

Specificity

Mouse, Rat

Antibody description

Rabbit polyclonal antibody to Cd1d1

Preparation

This antigen of this antibody was klh conjugated synthetic peptide derived from mouse cd1d 165-270/336

Formulation

Liquid, 0.01M TBS(pH7.4) with 1% BSA, 0.03% Proclin300 and 50% Glycerol.

Storage

Store at -20°C for one year. Avoid repeated freeze/thaw cycles. The lyophilized antibody is stable at room temperature for at least one month and for greater than a year when kept at -20°C. When reconstituted in sterile pH 7.4 0.01M PBS or diluent of antibody the antibody is stable for at least two weeks at 2-4°C.

Clonality

Polyclonal

Ig Type

Rabbit IgG

Applications

WB, FC

Dilutions

WB:1:500-2000

FC:1µg/Test

Validations

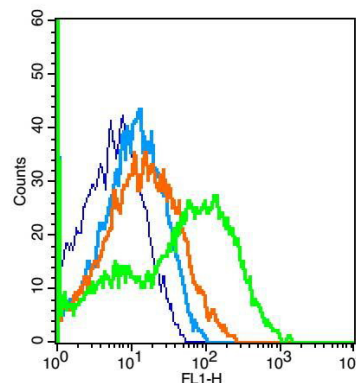


Fig1: Positive control: mouse thymocyte(2% Paraformaldehyde-fixed); Isotype Control Antibody: Rabbit IgG; Dilution: 1µg in 100 µl 1 X PBS containing 0.5% BSA; Secondary Antibody: Goat anti-rabbit IgG-FITC; Dilution: 1:200 in 1 X PBS containing 0.5% BSA; Primary Antibody: Rabbit Anti-CD1A antibody ; Dilution: 1µg in 100 µl 1X PBS containing 0.5% BSA

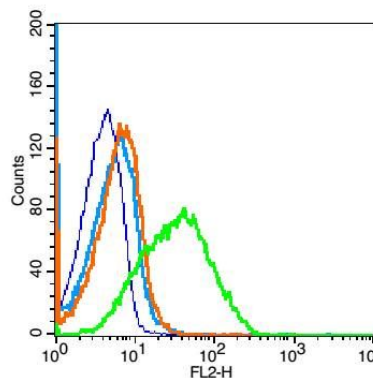


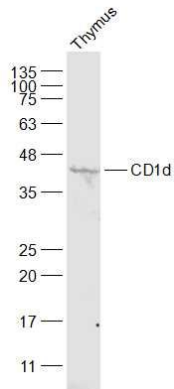
Fig2: Blank control(mouse):mouse spleen cells (fixed with 2% paraformaldehyde (10 min), then permeabilized with 90% ice-cold methanol for 30 min on ice).; Primary Antibody: Rabbit Anti- CD1A antibody , Dilution: 1µg in 100 µL 1X PBS containing 0.5% BSA;; Isotype Control Antibody: Rabbit IgG(orange) ,used under the same conditions);; Secondary Antibody: Goat anti-rabbit IgG-PE(white blue), Dilution: 1:200 in 1 X PBS

Anti-Cd1d1 antibody



Catalog Number: 175314

Fig3: Sample:; Thymus (Mouse) Lysate at 40 ug;
Primary: Anti-CD1d at 1/500 dilution; Secondary:
IRDye800CW Goat Anti-Rabbit IgG at 1/20000
dilution; Predicted band size: 36 kD; Observed
band size: 40 kD



containing 0.5% BSA.