

Product name

Anti- antibody

Specificity

Arabidopsis thaliana

Antibody description

Rabbit polyclonal antibody to

Preparation

This antigen of this antibody was synthetic peptide within thaliana ap-4 complex subunit sigma aa 51-100 / 143.

Formulation

Liquid, 1*PBS (pH7.4), 0.2% BSA, 50% Glycerol. Preservative: 0.05% Sodium Azide.

Storage

Store at +4°C after thawing. Aliquot store at -20°C. Avoid repeated freeze / thaw cycles.

Clonality

Polyclonal

Ig Type

IgG

Applications

IF, IHC-P, ELISA

Dilutions

IF:1:50-1:100

IHC-P:1:50-1:200

ELISA:1:10,000-1:20,000

Validations

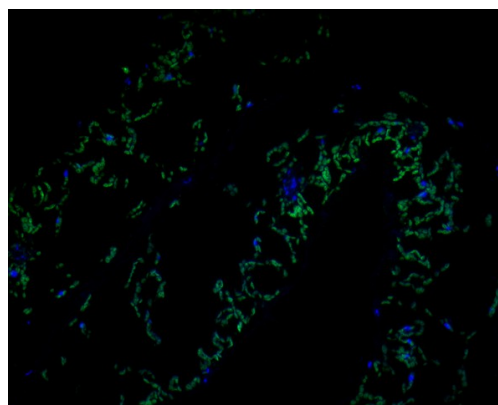
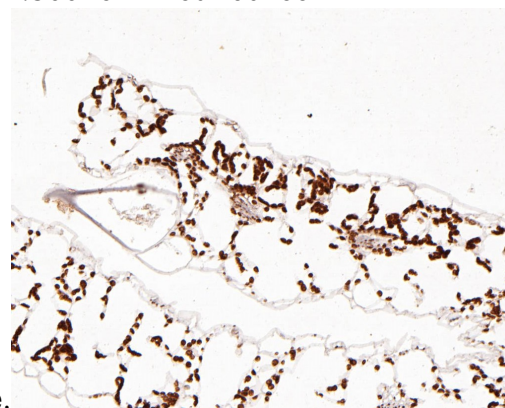


Fig1:: Immunofluorescence staining of paraffin-embedded A. thaliana using anti-AP-4 complex subunit sigma rabbit polyclonal antibody. The section was pre-treated using heat mediated antigen retrieval with Tris-EDTA buffer (pH 9.0) for 20 minutes. The tissues were blocked in 10% negative goat serum for 1 hour at room temperature, washed with PBS, and then probed with 175162# at 1/50 dilution for 10 hours at 4°C and detected using Alexa Fluor® 488 conjugate-Goat anti-Rabbit IgG (H+L) Secondary Antibody at a dilution of 1:500 for 1 hour at room



temperature.

Fig2:: Immunohistochemical analysis of paraffin-embedded A. thaliana tissue using anti-AP-4 complex subunit sigma antibody. The section was pre-treated using heat mediated antigen retrieval with Tris-EDTA buffer (pH 8.0-8.4) for 20 minutes. The tissues were blocked in 5% BSA for 30 minutes at room temperature, washed with ddH₂O and PBS, and then probed with the primary antibody (1/200) for 30 minutes at room temperature. The detection was performed using an HRP conjugated compact polymer system. DAB was used as the chromogen. Tissues were

Anti- antibody



Catalog Number: 175162

counterstained with hematoxylin and mounted with DPX.