

Anti-ITPR2 antibody

Catalog Number: 175135

Product name

Anti-ITPR2 antibody

Specificity

Human, Mouse, Rat

Antibody description

Rabbit polyclonal antibody to ITPR2

Preparation

This antigen of this antibody was recombinant protein within human itpr2 aa 1100-1450.

Formulation

Liquid, 1*PBS (pH7.4), 0.2% BSA, 50% Glycerol.
Preservative: 0.05% Sodium Azide.

Storage

Store at +4°C after thawing. Aliquot store at -20°C. Avoid repeated freeze / thaw cycles.

Clonality

Polyclonal

Ig Type

Rabbit IgG

Applications

Dot blot, ICC, FC, IHC-P

Dilutions

Dot Blot: 1:2,000-1:5,000

ICC: 1:50-1:100

IHC-P: 1:50 -1:200

FC: 1:50-1:100

Validations

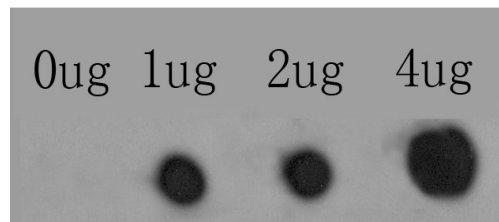


Fig1: Dot blot analysis of anti-ITPR2 on PVDF. 0-4ug antigens were given in this test. Anti-ITPR2 antibody was diluted with 1/500.

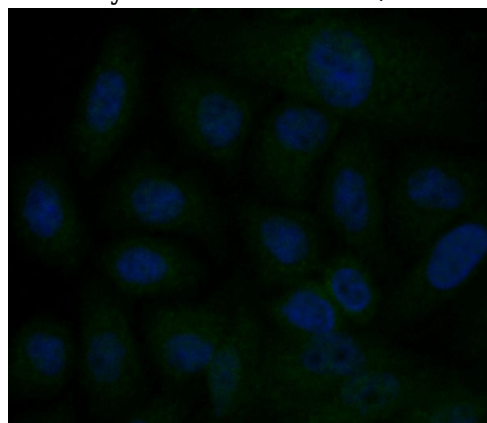


Fig2: ICC staining ITPR2 in HepG2 cells (green). The nuclear counter stain is DAPI (blue). Cells were fixed in paraformaldehyde, permeabilised with 0.25% Triton X100/PBS.

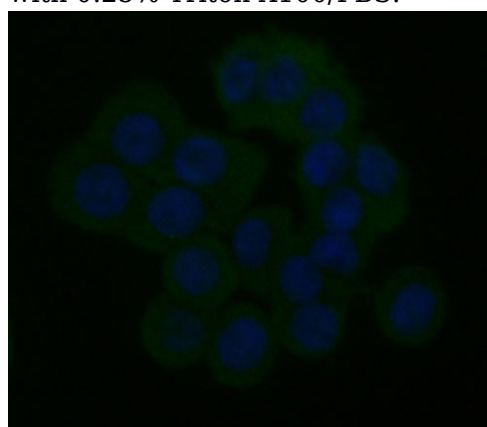


Fig3: ICC staining ITPR2 in HT-29 cells (green). The nuclear counter stain is DAPI (blue). Cells were fixed in paraformaldehyde, permeabilised with 0.25% Triton X100/PBS.

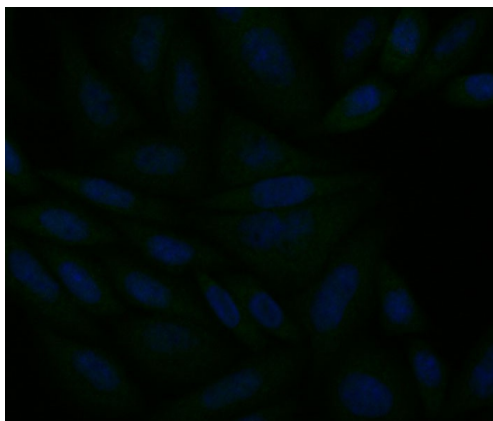


Fig4: ICC staining ITPR2 in SiHa cells (green). The nuclear counter stain is DAPI (blue). Cells were fixed in paraformaldehyde, permeabilised with 0.25% Triton X100/PBS.

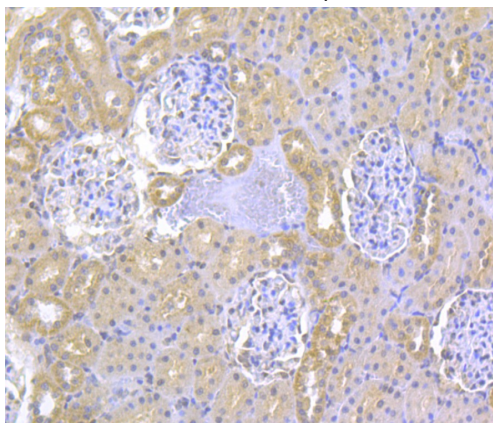


Fig5: Immunohistochemical analysis of paraffin-embedded rat kidney tissue using anti-ITPR2 antibody. Counter stained with hematoxylin.

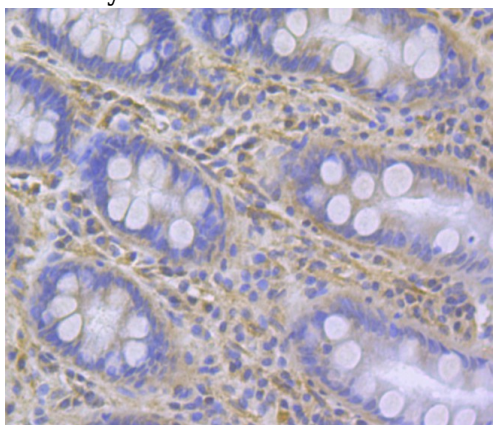


Fig6: Immunohistochemical analysis of paraffin-embedded human colon tissue using anti-ITPR2 antibody. Counter stained with hematoxylin.

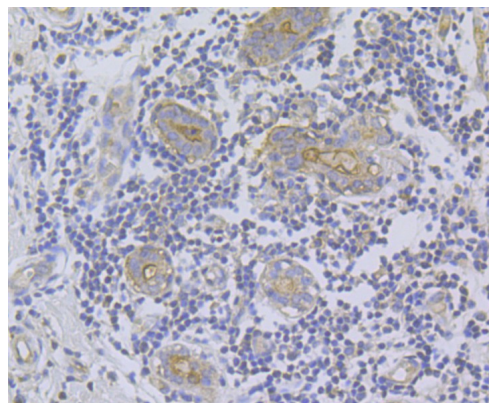


Fig7: Immunohistochemical analysis of paraffin-embedded human breast tissue using anti-ITPR2 antibody. Counter stained with hematoxylin.

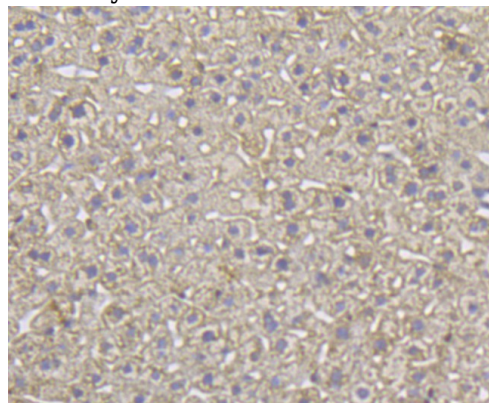


Fig8: Immunohistochemical analysis of paraffin-embedded mouse liver tissue using anti-ITPR2 antibody. Counter stained with hematoxylin.

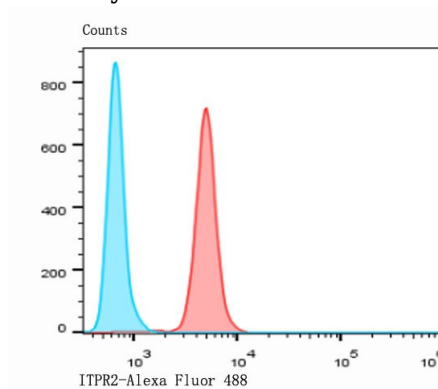


Fig9: Flow cytometric analysis of HepG2 cells with ITPR2 antibody at 1/100 dilution (red) compared with an unlabelled control (cells without incubation with primary antibody; blue). Alexa Fluor 488-conjugated goat anti-rabbit IgG was used as the secondary