

Anti-RYR1 antibody



Catalog Number: 175124

Product name

Anti-RYR1 antibody

Specificity

Human, Mouse

Antibody description

Rabbit polyclonal antibody to RYR1

Preparation

This antigen of this antibody was synthetic peptide within human ryr1 aa 1350-1400.

Formulation

Liquid, 1*PBS (pH7.4), 0.2% BSA, 50% Glycerol.
Preservative: 0.05% Sodium Azide.

Storage

Store at +4°C after thawing. Aliquot store at -20°C. Avoid repeated freeze / thaw cycles.

Clonality

Polyclonal

Ig Type

Rabbit IgG

Applications

Dot blot, IHC-P, FC

Dilutions

Dot Blot: 1:500-1:1,000

IHC-P: 1:50-1:200

FC: 1:50-1:100

Validations

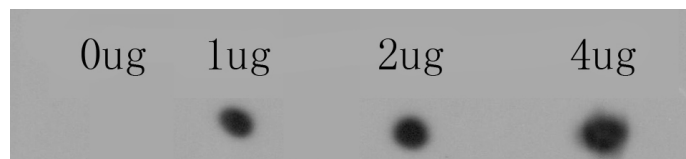
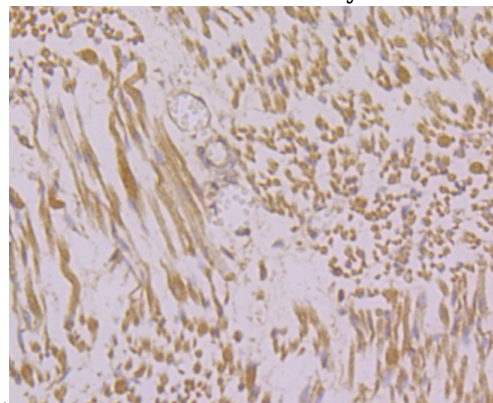
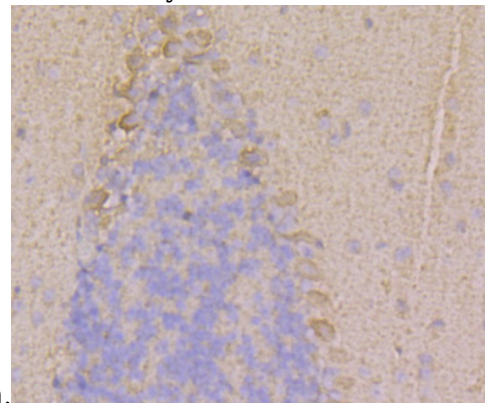


Fig1: Dot blot analysis of anti-RYR1 immunization peptide on PVDF. 1ug, 2ug and 4ug peptides were given in this test. Anti-RYR1 antibody was diluted



with 1/500.

Fig2: Immunohistochemical analysis of paraffin-embedded human fetal skeletal muscle tissue using anti-RYR1 antibody. Counter stained with



hematoxylin.

Fig3: Immunohistochemical analysis of paraffin-embedded mouse cerebellum tissue using anti-RYR1 antibody. Counter stained with hematoxylin.

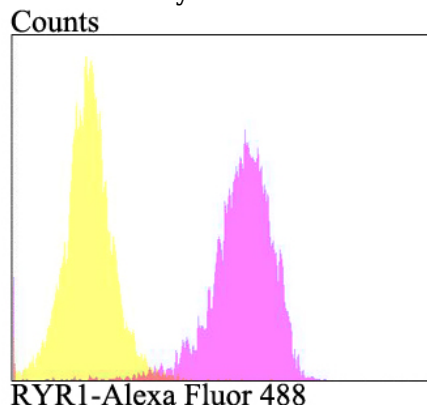


Fig4: Flow cytometric analysis of SiHa cells with RYR1 antibody at 1/100 dilution (fuchsia) compared with an unlabelled control (cells without incubation with primary antibody; yellow). Alexa Fluor 488-conjugated goat anti-rabbit IgG was used as the secondary antibody.