

# Anti-DYSF antibody



Catalog Number: 175102

## Product name

Anti-DYSF antibody

## Specificity

Human

## Antibody description

Rabbit polyclonal antibody to DYSF

## Preparation

This antigen of this antibody was recombinant protein

## Formulation

Liquid, 1\*PBS (pH7.4), 0.2% BSA, 50% Glycerol.  
Preservative: 0.05% Sodium Azide.

## Storage

Store at +4°C after thawing. Aliquot store at -20°C or -80°C. Avoid repeated freeze / thaw cycles.

## Clonality

Polyclonal

## Ig Type

IgG

## Applications

WB, IHC-P, FC

## Dilutions

WB: 1:500-1:2,000

IHC-P: 1:50-1:200

FC: 1:50-1:100

## Validations

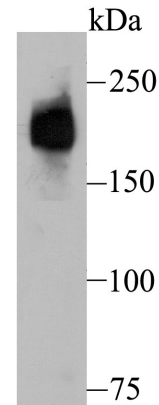


Fig1: Western blot analysis of Dysferlin on human fetal skeletal muscle tissue lysate using anti-Dysferlin antibody at 1/500 dilution.

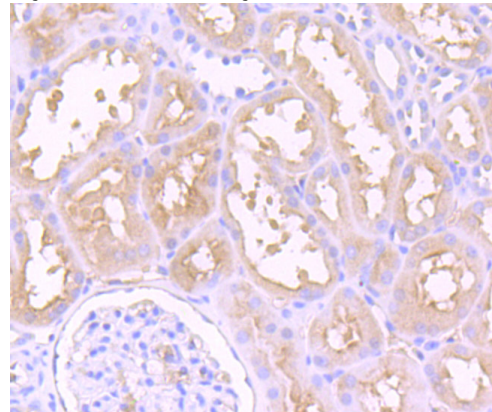


Fig2: Immunohistochemical analysis of paraffin-embedded human kidney tissue using anti-Dysferlin antibody. Counter stained with hematoxylin.

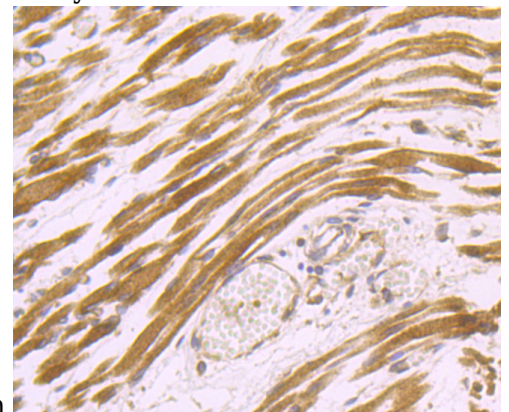


Fig3: Immunohistochemical analysis of paraffin-embedded human fetal skeletal muscle tissue using anti-Dysferlin antibody. Counter stained with hematoxylin.

# Anti-DYSF antibody

Catalog Number: 175102

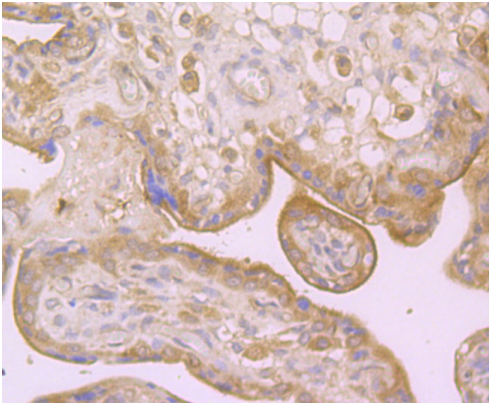
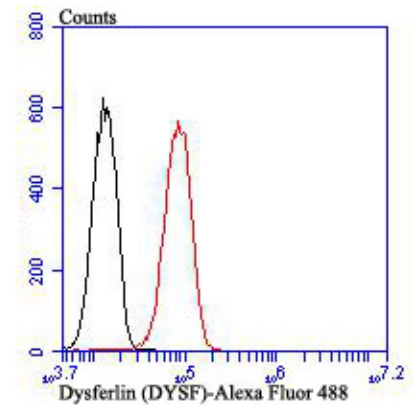


Fig4: Immunohistochemical analysis of paraffin-embedded human placenta tissue using anti-Dysferlin antibody. Counter stained with



hematoxylin.

Fig5: Flow cytometric analysis of HUVEC cells with Dysferlin antibody at 1/100 dilution (red) compared with an unlabelled control (cells without incubation with primary antibody; black). Alexa Fluor 488-conjugated goat anti rabbit IgG was used as the secondary antibody.