

Anti-Ccnd1 antibody

Catalog Number: 175101

Product name

Anti-Ccnd1 antibody

Specificity

Human, Mouse, Rat

Antibody description

Rabbit polyclonal antibody to Ccnd1

Preparation

This antigen of this antibody was peptide

Formulation

Liquid, 1*PBS (pH7.4), 0.2% BSA, 40% Glycerol.
Preservative: 0.05% Sodium Azide.

Storage

Store at +4°C after thawing. Aliquot store at -20°C or -80°C. Avoid repeated freeze / thaw cycles.

Clonality

Polyclonal

Ig Type

Rabbit IgG

Applications

WB, IHC-P

Dilutions

WB: 1:2,000-1:5,000

IHC-P: 1:200

Validations

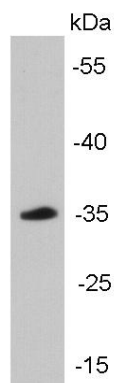


Fig1: Western blot analysis of cyclin D1 on mouse brain tissue lysates using anti-Cyclin D1 antibody at 1/5000 dilution.; Positive control: mouse brain

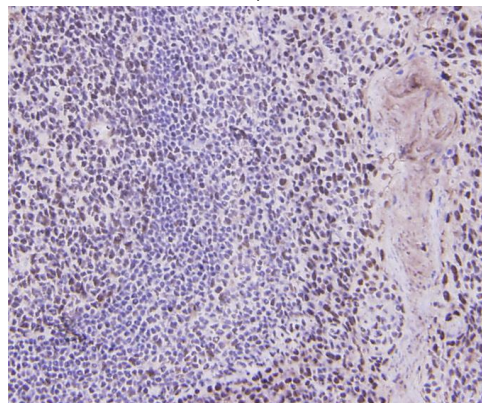


Fig2: Immunohistochemical analysis of paraffin-embedded human tonsil tissue using anti-Cyclin D1 antibody. Counter stained with hematoxylin.

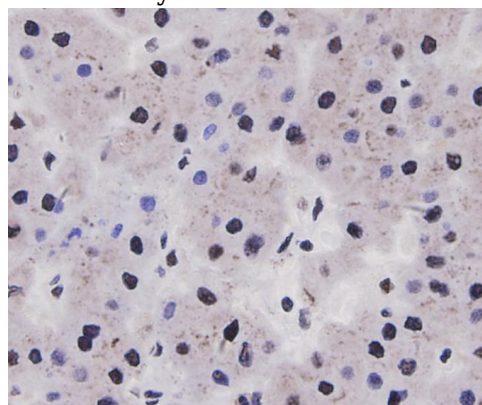


Fig3: Immunohistochemical analysis of paraffin-embedded human liver carcinoma tissue using anti-Cyclin D1 antibody. Counter stained with hematoxylin.