

# Anti-PPP1R15A antibody



Catalog Number: 175093

## Product name

Anti-PPP1R15A antibody

## Specificity

Human

## Antibody description

Mouse monoclonal antibody to PPP1R15A

## Preparation

This antigen of this antibody was synthetic peptide corresponding to n terminal of human gadd34.

## Formulation

Liquid, 1\*PBS (pH7.4), 0.2% BSA, 50% Glycerol.  
Preservative: 0.05% Sodium Azide.

## Storage

Store at +4°C after thawing. Aliquot store at -20°C. Avoid repeated freeze / thaw cycles.

## Clonality

Monoclonal

## Ig Type

IgG1

## Applications

WB, IHC-P, FC

## Dilutions

WB:1:500-1:1,000

IHC-P:1:50-1:200

FC:1:50-1:100

## Validations

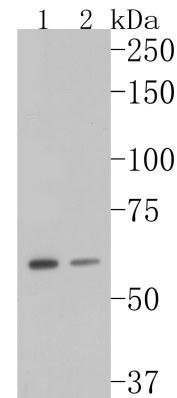


Fig1:: Western blot analysis of GADD34 on different lysates. Proteins were transferred to a PVDF membrane and blocked with 5% BSA in PBS for 1 hour at room temperature. The primary antibody ( 1/500) was used in 5% BSA at room temperature for 2 hours. Goat Anti-Mouse IgG - HRP Secondary Antibody (HA1006) at 1:5,000 dilution was used for 1 hour at room temperature.; Positive control; Lane 1: HepG2 cell lysate; Lane 2: K562 cell lysate

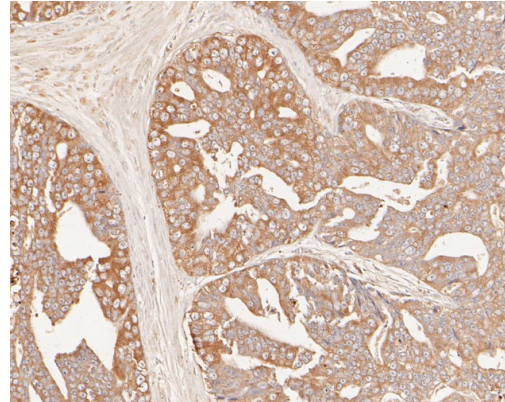


Fig2:: Immunohistochemical analysis of paraffin-embedded human prostate carcinoma tissue using anti-GADD34 antibody. The section was pre-treated using heat mediated antigen retrieval with Tris-EDTA buffer (pH 8.0-8.4) for 20 minutes. The tissues were blocked in 5% BSA for 30 minutes at room temperature, washed with ddH<sub>2</sub>O and PBS, and then probed with the primary antibody ( 1/100) for 30 minutes at room temperature. The detection was performed using an HRP conjugated compact polymer system. DAB was used as the chromogen. Tissues were counterstained with hematoxylin and mounted with DPX.

# Anti-PPP1R15A antibody

Catalog Number: 175093

---

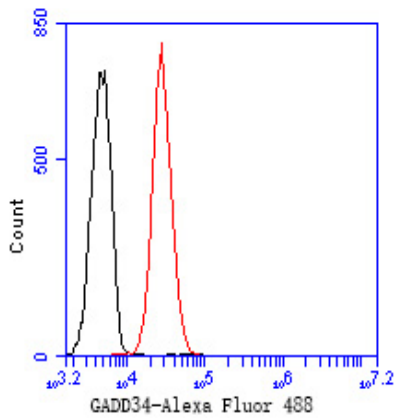


Fig3;; Flow cytometric analysis of GADD34 was done on K562 cells. The cells were fixed, permeabilized and stained with the primary antibody ( 1/50) (red). After incubation of the primary antibody at room temperature for an hour, the cells were stained with a Alexa Fluor 488-conjugated Goat anti-Mouse IgG Secondary antibody at 1/1000 dilution for 30 minutes. Unlabelled sample was used as a control (cells without incubation with primary antibody; black).