

Anti-LPA antibody

Catalog Number: 175062

Product name

Anti-LPA antibody

Specificity

Human

Antibody description

Mouse monoclonal antibody to LPA

Preparation

This antigen of this antibody was recombinant protein

Formulation

Liquid, 1*TBS (pH7.4), 1%BSA, Preservative: 0.05% Sodium Azide.

Storage

Store at +4°C after thawing. Aliquot store at -20°C or -80°C. Avoid repeated freeze / thaw cycles.

Clonality

Monoclonal

Ig Type

Mouse IgG1

Applications

WB, ICC, IHC-P

Dilutions

WB: 1:500-1:1,000

ICC: 1:50-1:200

IHC-P: 1:50-1:200

Validations

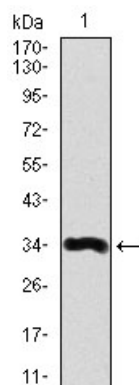


Fig1: Western blot analysis of Lipoprotein a on human Lipoprotein a recombinant protein using anti-Lipoprotein a antibody at 1/1,000 dilution.

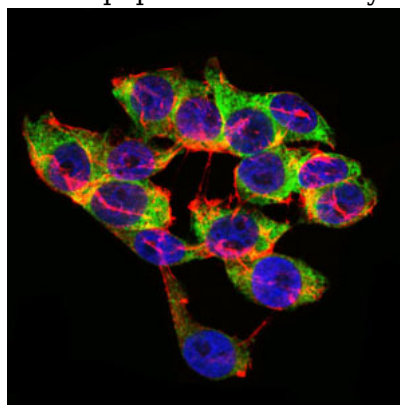


Fig2: ICC staining Lipoprotein a (green) and actin filaments (red) in HepG2 cell. The nuclear counter stain is DAPI (blue). Cells were fixed in paraformaldehyde, permeabilised with 0.25% Triton X100/PBS.

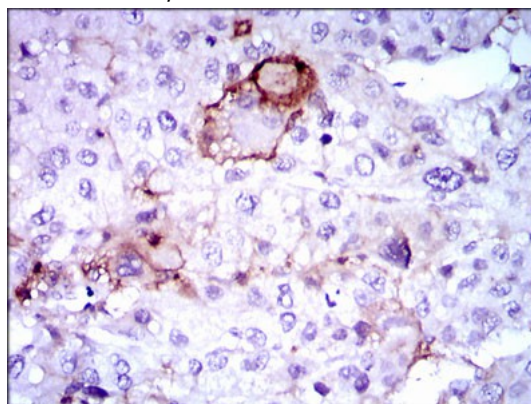


Fig3: Immunohistochemical analysis of paraffin-embedded human liver cancer tissue using anti-Lipoprotein a antibody. Counter stained with hematoxylin.

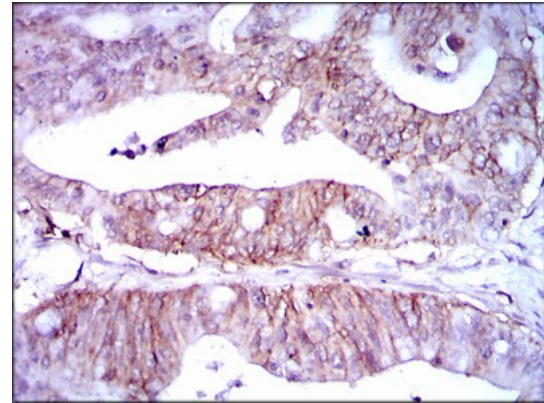
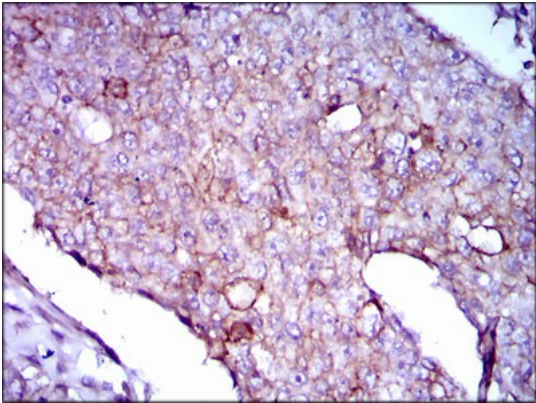


Fig4: Immunohistochemical analysis of paraffin-embedded human breast cancer tissue using anti-Lipoprotein a antibody. Counter stained with hematoxylin.

Fig5: Immunohistochemical analysis of paraffin-embedded human rectum cancer tissue using anti-Lipoprotein a antibody. Counter stained with hematoxylin.