

## Product name

Anti-IL7 antibody

## Specificity

Human, Rat

## Antibody description

Mouse monoclonal antibody to IL7

## Preparation

This antigen of this antibody was recombinant protein

## Formulation

Liquid, 1\*TBS (pH7.4), 1%BSA, 40%Glycerol.  
Preservative: 0.18% Sodium Azide.

## Storage

Store at -20 °C. Stable for 12 months from date of receipt.

## Clonality

Monoclonal

## Ig Type

IgG1

## Applications

ELISA, WB, ICC, IHC-P

## Dilutions

WB: 1:500-1:1,000

ICC: 1:100-1:500

IHC-P: 1:50-1:200

ELISA: 1:5,000-1:10,000

## Validations

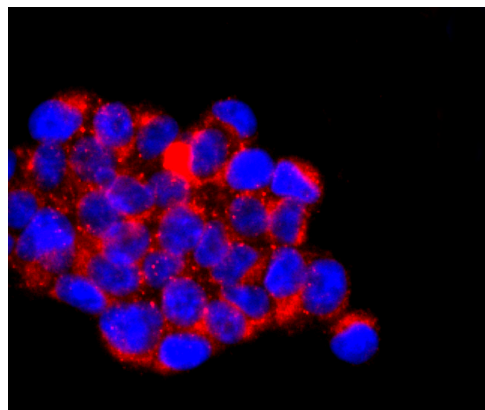


Fig1: ICC staining IL7 in 293T cells (red). The nuclear counter stain is DAPI (blue). Cells were fixed in paraformaldehyde, permeabilised with 0.25% Triton X100/PBS.

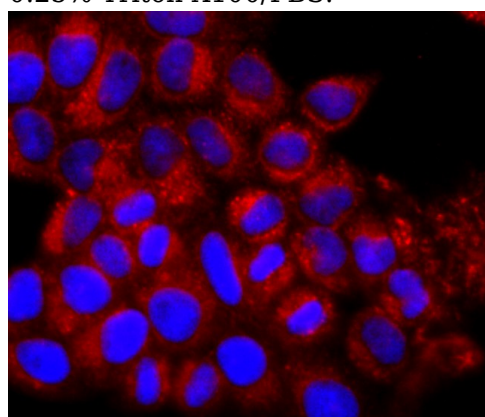


Fig2: ICC staining IL7 in HeLa cells (red). The nuclear counter stain is DAPI (blue). Cells were fixed in paraformaldehyde, permeabilised with 0.25% Triton X100/PBS.

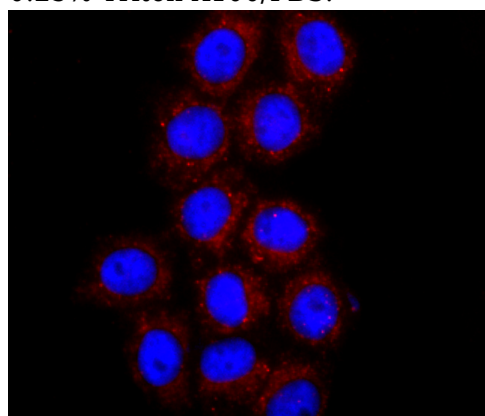


Fig3: ICC staining IL7 in HepG2 cells (red). The nuclear counter stain is DAPI (blue). Cells were fixed in paraformaldehyde, permeabilised with 0.25% Triton X100/PBS.

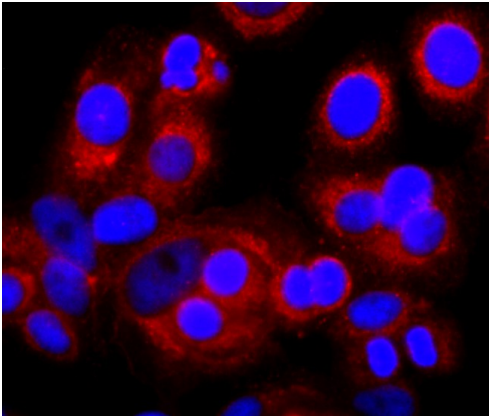


Fig4: ICC staining IL7 in MCF-7 cells (red). The nuclear counter stain is DAPI (blue). Cells were fixed in paraformaldehyde, permeabilised with 0.25% Triton X100/PBS.

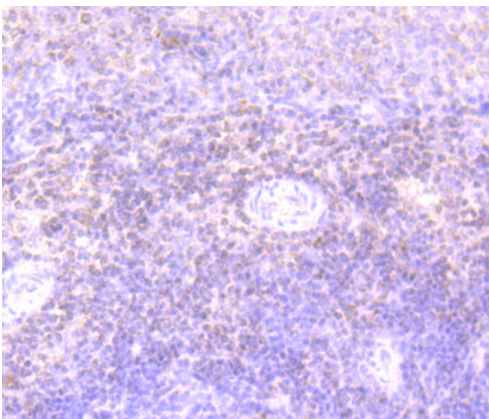


Fig5: Immunohistochemical analysis of paraffin-embedded rat spleen tissue using anti-IL7

antibody. Counter stained with hematoxylin.

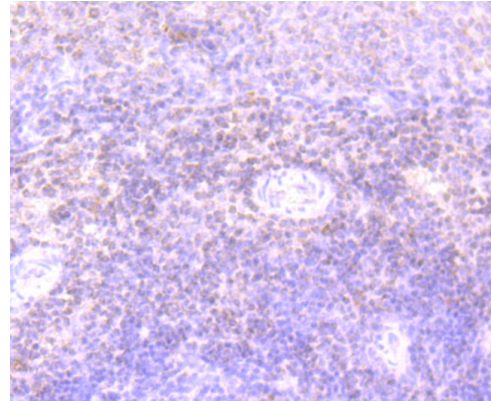


Fig6: Immunohistochemical analysis of paraffin-embedded human colon cancer tissue using anti-IL7 antibody. Counter stained with hematoxylin.

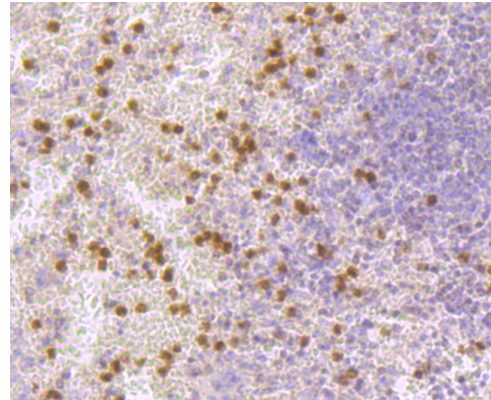


Fig7: Immunohistochemical analysis of paraffin-embedded human spleen tissue using anti-IL7 antibody. Counter stained with hematoxylin.