

Anti-CELSR2 antibody



Catalog Number: 175022

Product name

Anti-CELSR2 antibody

Dilutions

WB: 1:250-1:500

Specificity

ICC: 1:50-1:100

Human, Mouse

Validations

Antibody description

Rabbit polyclonal antibody to CELSR2

Preparation

This antigen of this antibody was synthetic peptide within n-terminal human cadherin egf lag seven-pass g-type receptor 2.

Formulation

Liquid, 1*PBS (pH7.4), 0.2% BSA, 40% Glycerol.
Preservative: 0.05% Sodium Azide.

Storage

Store at +4°C after thawing. Aliquot store at -20°C. Avoid repeated freeze / thaw cycles.

Clonality

Polyclonal

Ig Type

Rabbit IgG

Applications

WB, ICC

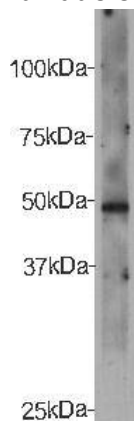


Fig1: Western blot analysis on recombinant protein of CELSR2 using anti- CELSR2 polyclonal

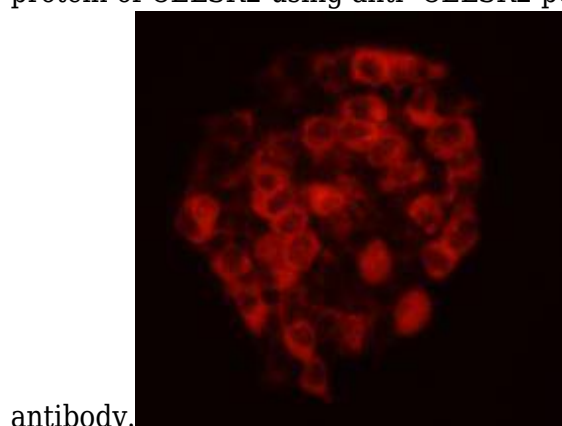


Fig2: ICC image of CELSR2 antibody stained D3 (Murine Embryonic Stem Cell Line).The secondary antibody (red) was goat anti-rabbit IgG (H+L) alexa555 conjugated.