

Anti-MMP26 Rabbit antibody



Catalog Number: 169025

Product name

Anti-MMP26 Rabbit antibody

Specificity

Human, Mouse, Rat

Antibody description

MMP26 Rabbit monoclonal antibody

Preparation

Antigen: A synthetic peptide of human MMP26

Formulation

50nM Tris-Glycine(pH 7.4), 0.15M NaCl, 40%Glycerol, 0.01% sodium azide and 0.05% BSA.

Storage

Store at 4°C short term. Store at -20°C long term. Avoid freeze / thaw cycle.

Clonality

Monoclonal

Ig Type

Rabbit IgG

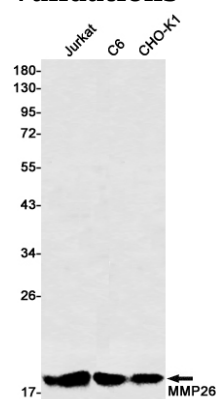
Applications

WB

Dilutions

WB: 1/1000

Validations



Western blot detection of MMP26 in Jurkat, C6, CHO-K1 cell lysates using MMP26 Rabbit mAb(1:500 diluted). Predicted band size: 30kDa. Observed band size: 19kDa.