

# Anti-MCM2 Rabbit antibody



Catalog Number: 168975

## Product name

Anti-MCM2 Rabbit antibody

## Specificity

Human, Mouse, Rat

## Antibody description

MCM2 Rabbit monoclonal antibody

## Preparation

Antigen: A synthetic peptide of human MCM2

## Formulation

Supplied in 50nM Tris-Glycine(pH 7.4), 0.15M NaCl, 40%Glycerol, 0.01% sodium azide and 0.05% BSA.

## Storage

Store at 4°C short term. Aliquot and store at -20°C long term. Avoid freeze / thaw cycle.

## Clonality

Monoclonal

## Ig Type

Rabbit IgG

## Applications

WB, ICC/IF, FC

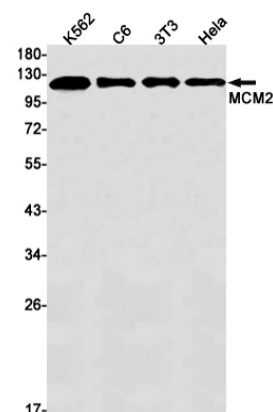
## Dilutions

WB: 1/1000

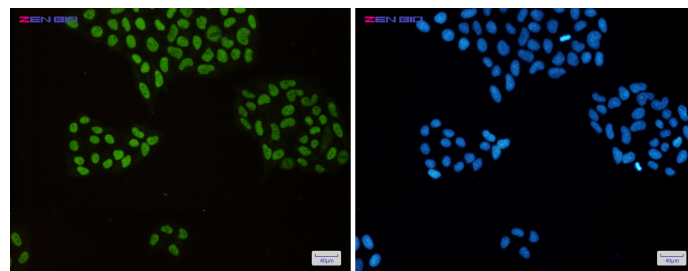
ICC/IF: 1/200

FC: 1/20

## Validations



Western blot detection of MCM2 in K562,C6,3T3,HeLa cell lysates using MCM2 Rabbit mAb(1:1000 diluted).Predicted band size:102kDa.Observed band size:125kDa.



Immunocytochemistry of MCM2(green) in HeLa cells using MCM2 Rabbit mAb at dilution 1/50, and DAPI(blue)