

# Anti-PKC beta 1 Rabbit antibody



Catalog Number: 168971

## Product name

Rabbit IgG

Anti-PKC beta 1 Rabbit antibody

## Applications

## Specificity

WB, ICC/IF, FC, IP

Human, Rat

## Dilutions

## Antibody description

WB: 1/1000

PKC beta 1 Rabbit monoclonal antibody

ICC/IF: 1/50

## Preparation

FC: 1/20

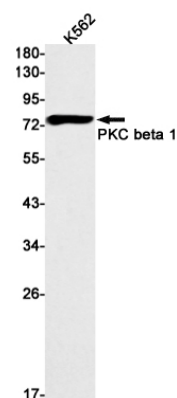
Antigen: A synthetic peptide of human PKC beta 2

IP: 1/20

## Formulation

Supplied in 50nM Tris-Glycine(pH 7.4), 0.15M NaCl, 40%Glycerol, 0.01% sodium azide and 0.05% BSA.

## Validations



## Storage

Store at 4°C short term. Aliquot and store at -20°C long term. Avoid freeze / thaw cycle.

Western blot detection of PKC beta 1 in K562 cell lysates using PKC beta 1 Rabbit mAb(1:1000 diluted).Predicted band size:77kDa.Observed band size:77kDa.

## Clonality

Monoclonal

## Ig Type