

Anti-Phospho-PKC gamma (Thr514) Rabbit antibody



Catalog Number: 168917

Product name

Anti-Phospho-PKC gamma (Thr514) Rabbit antibody

Specificity

Human, Mouse, Rat

Antibody description

Phospho-PKC gamma (Thr514) Rabbit monoclonal antibody

Preparation

Antigen: A synthetic phosphopeptide corresponding to residues surrounding Thr514 of human PKC

Formulation

Supplied in 50nM Tris-Glycine(pH 7.4), 0.15M NaCl, 40%Glycerol, 0.01% sodium azide and 0.05% BSA.

Storage

Store at 4°C short term. Aliquot and store at -20°C long term. Avoid freeze / thaw cycle.

Clonality

Monoclonal

Ig Type

Rabbit IgG

Applications

WB, IHC-P, IP

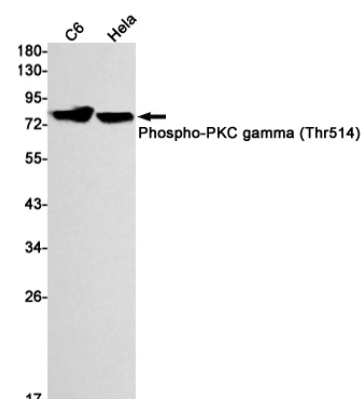
Dilutions

1:1000-1:5000

1:20-1:100

1:20

Validations



Western blot detection of Phospho-PKC gamma (Thr514) in C6, HeLa cell lysates using Phospho-PKC gamma (Thr514) Rabbit mAb(1:1000 diluted). Predicted band size: 78kDa. Observed band size: 78-85kDa.