

Anti-DcR2 Rabbit antibody



Catalog Number: 168844

Product name

Anti-DcR2 Rabbit antibody

Specificity

Human

Antibody description

DcR2 Rabbit monoclonal antibody

Preparation

Antigen: A synthetic peptide of human DcR2

Formulation

50nM Tris-Glycine(pH 7.4), 0.15M NaCl, 40%Glycerol, 0.01% sodium azide and 0.05% BSA.

Storage

Store at 4°C short term. Store at -20°C long term. Avoid freeze / thaw cycle.

Clonality

Monoclonal

Ig Type

Rabbit IgG

Applications

WB, IHC-P, ICC/IF

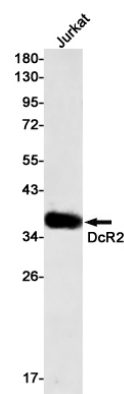
Dilutions

WB: 1/1000

IHC: 1/50

ICC/IF: 1/20

Validations



Western blot detection of DcR2 in Jurkat cell lysates using DcR2 Rabbit mAb(1:500 diluted).Predicted band size:42kDa.Observed band size:35kDa.