

Anti-Phospho-CD3 zeta (Tyr142) Rabbit antibody



Catalog Number: 168822

Product name

Anti-Phospho-CD3 zeta (Tyr142) Rabbit antibody

Ig Type

Rabbit IgG

Specificity

Human

Applications

WB, ICC/IF, IP

Antibody description

Phospho-CD3 zeta (Tyr142) Rabbit monoclonal antibody

Dilutions

WB: 1/1000

ICC/IF: 1/50

IP: 1/20

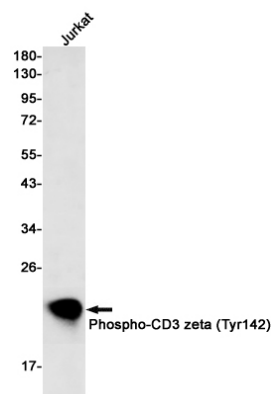
Preparation

Antigen: A synthetic phosphopeptide corresponding to residues surrounding Tyr142 of human CD3 zeta

Validations

Formulation

50nM Tris-Glycine(pH 7.4), 0.15M NaCl, 40%Glycerol, 0.01% sodium azide and 0.05% BSA.



Storage

Store at 4°C short term. Store at -20°C long term. Avoid freeze / thaw cycle.

Western blot detection of Phospho-CD3 zeta (Tyr142) in Jurkat cell lysates using Phospho-CD3 zeta (Tyr142) Rabbit mAb(1:500 diluted).Predicted band size:19kDa.Observed band size:19kDa.

Clonality

Monoclonal