

Anti-PGD Rabbit antibody



Catalog Number: 168815

Product name

Anti-PGD Rabbit antibody

Dilutions

1:1000-1:5000

Specificity

1:50-1:200

Human, Mouse, Rat

1:20-1:100

Antibody description

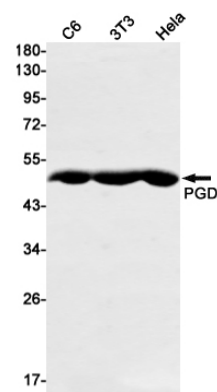
1:20-1:50

PGD Rabbit monoclonal antibody

Validations

Preparation

Antigen: A synthetic peptide of human PGD



Formulation

Supplied in 50nM Tris-Glycine(pH 7.4), 0.15M NaCl, 40%Glycerol, 0.01% sodium azide and 0.05% BSA.

Western blot detection of PGD in C6,3T3,HeLa cell lysates using PGD Rabbit mAb(1:1000 diluted).Predicted band size:53kDa.Observed band size:49kDa.

Storage

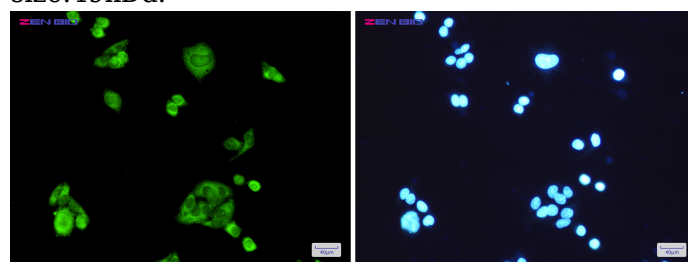
Store at 4°C short term. Aliquot and store at -20°C long term. Avoid freeze / thaw cycle.

Clonality

Monoclonal

Ig Type

Rabbit IgG



Applications

WB, ICC/IF, FC, IP

Immunocytochemistry of PGD(green) in HeLa cells using PGD Rabbit mAb at dilution 1/200, and DAPI(blue)