

# Anti-Scavenging Receptor SR-BI Rabbit antibody



Catalog Number: 168802

## Product name

Anti-Scavenging Receptor SR-BI Rabbit antibody

## Ig Type

Rabbit IgG

## Specificity

Human, Mouse, Rat

## Applications

WB

## Antibody description

Scavenging Receptor SR-BI Rabbit monoclonal antibody

## Dilutions

WB: 1/1000

## Preparation

Antigen: A synthetic peptide of human Scavenging Receptor SR-BI

## Formulation

Supplied in 50nM Tris-Glycine(pH 7.4), 0.15M NaCl, 40%Glycerol, 0.01% sodium azide and 0.05% BSA.

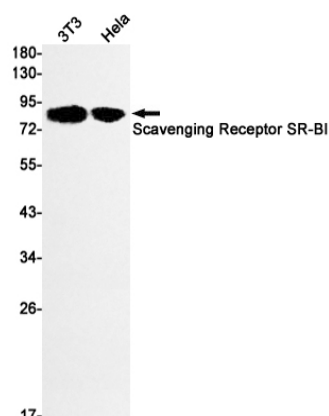
## Storage

Store at 4°C short term. Aliquot and store at -20°C long term. Avoid freeze / thaw cycle.

## Clonality

Monoclonal

## Validations



Western blot detection of Scavenging Receptor SR-BI in 3T3, HeLa cell lysates using Scavenging Receptor SR-BI Rabbit mAb(1:1000 diluted). Predicted band size: 61 kDa. Observed band size: 80 kDa.