

Anti-Phospho-MCM2 (Ser41) Rabbit antibody



Catalog Number: 168774

Product name

Anti-Phospho-MCM2 (Ser41) Rabbit antibody

Specificity

Human, Mouse, Rat

Antibody description

Phospho-MCM2 (Ser41) Rabbit monoclonal antibody

Preparation

Antigen: A synthetic phosphopeptide corresponding to residues surrounding Ser41 of human MCM2

Formulation

Supplied in 50nM Tris-Glycine(pH 7.4), 0.15M NaCl, 40%Glycerol, 0.01% sodium azide and 0.05% BSA.

Storage

Store at 4°C short term. Aliquot and store at -20°C long term. Avoid freeze / thaw cycle.

Clonality

Monoclonal

Ig Type

Rabbit IgG

Applications

WB, IHC-P, IP

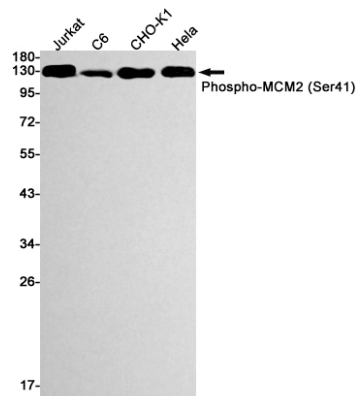
Dilutions

1:5000

1:50

1:20

Validations



Western blot detection of Phospho-MCM2 (Ser41) in Jurkat, C6, CHO-K1, HeLa cell lysates using Phospho-MCM2 (Ser41) Rabbit mAb(1:1000 diluted). Predicted band size:102kDa. Observed band size:125kDa.