

# Anti-DKC1 Rabbit antibody



Catalog Number: 168754

## Product name

Anti-DKC1 Rabbit antibody

## Specificity

Human, Mouse, Rat

## Antibody description

DKC1 Rabbit monoclonal antibody

## Preparation

Antigen: A synthetic peptide of human DKC1

## Formulation

Supplied in 50nM Tris-Glycine(pH 7.4), 0.15M NaCl, 40%Glycerol, 0.01% sodium azide and 0.05% BSA.

## Storage

Store at 4°C short term. Aliquot and store at -20°C long term. Avoid freeze / thaw cycle.

## Clonality

Monoclonal

## Ig Type

Rabbit IgG

## Applications

WB, IHC-P, ICC/IF

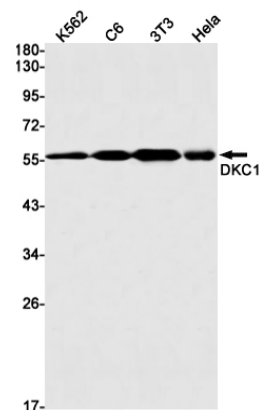
## Dilutions

1:1000-1:5000

1:20

1:20-1:100

## Validations



Western blot detection of DKC1 in K562, C6, 3T3, HeLa cell lysates using DKC1 Rabbit mAb(1:1000 diluted). Predicted band size: 58kDa. Observed band size: 58kDa.