

Anti-NXF1 Rabbit antibody



Catalog Number: 168752

Product name

Rabbit IgG

Anti-NXF1 Rabbit antibody

Applications

Specificity

WB, IHC-P, ICC/IF, IP

Human

Dilutions

Antibody description

1:1000

NXF1 Rabbit monoclonal antibody

1:50

Preparation

1:50

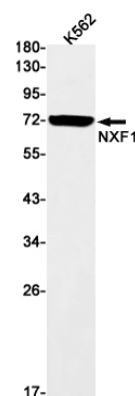
Antigen: A synthetic peptide of human NXF1

1:20

Formulation

Supplied in 50nM Tris-Glycine(pH 7.4), 0.15M NaCl, 40%Glycerol, 0.01% sodium azide and 0.05% BSA.

Validations



Storage

Store at 4°C short term. Aliquot and store at -20°C long term. Avoid freeze / thaw cycle.

Western blot detection of NXF1 in K562 cell lysates using NXF1 Rabbit mAb(1:1000 diluted).Predicted band size:70kDa.Observed band size:70kDa.

Clonality

Monoclonal

Ig Type