

Anti-Cyclophilin B Rabbit antibody



Catalog Number: 168714

Product name

Anti-Cyclophilin B Rabbit antibody

Specificity

Human, Mouse, Rat

Antibody description

Cyclophilin B Rabbit monoclonal antibody

Preparation

Antigen: A synthetic peptide of human Cyclophilin B

Formulation

50nM Tris-Glycine(pH 7.4), 0.15M NaCl, 40%Glycerol, 0.01% sodium azide and 0.05% BSA.

Storage

Store at 4°C short term. Store at -20°C long term. Avoid freeze / thaw cycle.

Clonality

Monoclonal

Ig Type

Rabbit IgG

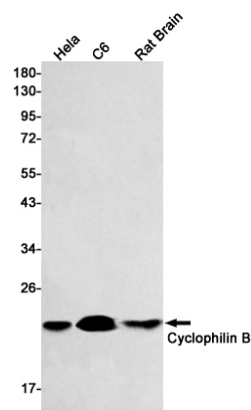
Applications

WB

Dilutions

WB: 1/2000

Validations



Western blot detection of Cyclophilin B in HeLa,C6,Rat Brain lysates using Cyclophilin B Rabbit mAb(1:500 diluted).Predicted band size:24kDa.Observed band size:20kDa.