

# Anti-Fructose 6 Phosphate Kinase Rabbit antibody



Catalog Number: 168694

## Product name

Anti-Fructose 6 Phosphate Kinase Rabbit antibody

## Dilutions

1:1000-1:5000

## Specificity

1:20-1:50

Human, Mouse, Rat

1:20-1:100

## Antibody description

Fructose 6 Phosphate Kinase Rabbit monoclonal antibody

## Preparation

Antigen: A synthetic peptide of human Fructose 6 Phosphate Kinase

## Formulation

Supplied in 50nM Tris-Glycine(pH 7.4), 0.15M NaCl, 40%Glycerol, 0.01% sodium azide and 0.05% BSA.

## Storage

Store at 4°C short term. Aliquot and store at -20°C long term. Avoid freeze / thaw cycle.

## Clonality

Monoclonal

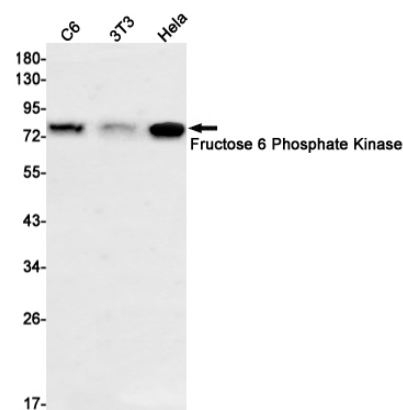
## Ig Type

Rabbit IgG

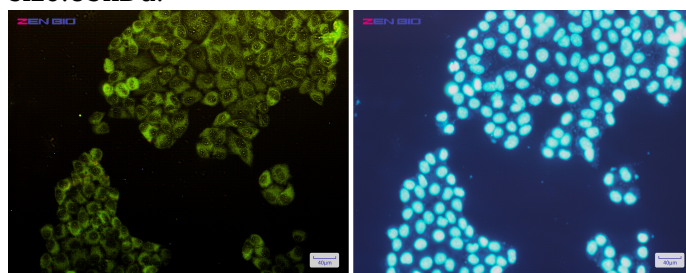
## Applications

WB, ICC/IF, FC

## Validations



Western blot detection of Fructose 6 Phosphate Kinase in C6,3T3,HeLa cell lysates using Fructose 6 Phosphate Kinase Rabbit mAb(1:1000 diluted).Predicted band size:85kDa.Observed band size:85kDa.



Immunocytochemistry of Fructose 6 Phosphate Kinase(green) in HeLa cells using Fructose 6 Phosphate Kinase Rabbit mAb at dilution 1/200, and DAPI(blue)