

Anti-Phospho-Synapsin I (Ser9) Rabbit antibody



Catalog Number: 168590

Product name

Monoclonal

Anti-Phospho-Synapsin I (Ser9) Rabbit antibody

Ig Type

Rabbit IgG

Specificity

Human, Mouse, Rat

Applications

WB, IHC-P

Antibody description

Phospho-Synapsin I (Ser9) Rabbit monoclonal antibody

Dilutions

1:1000

Preparation

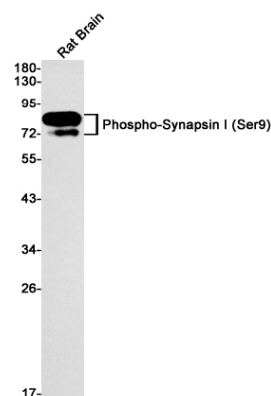
1:50

Antigen: A synthetic phosphopeptide corresponding to residues surrounding Ser9 of human Synapsin I

Validations

Formulation

Supplied in 50nM Tris-Glycine(pH 7.4), 0.15M NaCl, 40%Glycerol, 0.01% sodium azide and 0.05% BSA.



Storage

Store at 4°C short term. Aliquot and store at -20°C long term. Avoid freeze / thaw cycle.

Western blot detection of Phospho-Synapsin I (Ser9) in Rat Brain cell using Phospho-Synapsin I (Ser9) Rabbit mAb(1:1000 diluted). Predicted band size:74kDa.

Clonality