

Anti-Phospho-PKC alpha (Thr638) Rabbit antibody



Catalog Number: 168589

Product name

Anti-Phospho-PKC alpha (Thr638) Rabbit antibody

Dilutions

1:2000

Specificity

1:50

Human, Mouse, Rat

1:20

Validations

Antibody description

Phospho-PKC alpha (Thr638) Rabbit monoclonal antibody

Preparation

Antigen: A synthetic phosphopeptide corresponding to residues surrounding Thr638 of human PKC alpha

Formulation

Supplied in 50nM Tris-Glycine(pH 7.4), 0.15M NaCl, 40%Glycerol, 0.01% sodium azide and 0.05% BSA.

Storage

Store at 4°C short term. Aliquot and store at -20°C long term. Avoid freeze / thaw cycle.

Clonality

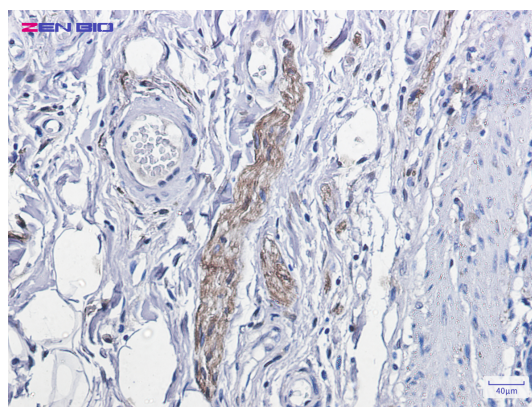
Monoclonal

Ig Type

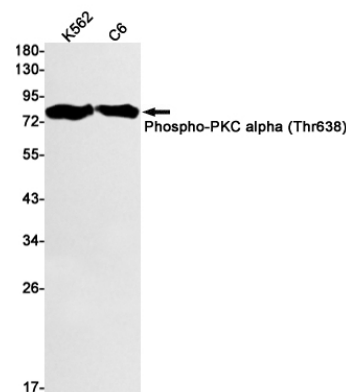
Rabbit IgG

Applications

WB, IHC-P, IP



Immunohistochemistry of Phospho-PKC alpha (Thr638) in paraffin-embedded human colon cancer tissue using Phospho-PKC alpha (Thr638) Rabbit mAb at dilution 1/100



Western blot detection of Phospho-PKC alpha (Thr638) in K562,C6 cell lysates using Phospho-PKC alpha (Thr638) Rabbit mAb(1:1000 diluted).Predicted band size:77kDa.Observed band size:80kDa.