

Anti-SIRT2 Rabbit antibody



Catalog Number: 168556

Product name

Anti-SIRT2 Rabbit antibody

Specificity

Human, Rat

Antibody description

SIRT2 Rabbit monoclonal antibody

Preparation

Antigen: A synthetic peptide of human SIRT2

Formulation

Supplied in 50nM Tris-Glycine(pH 7.4), 0.15M NaCl, 40%Glycerol, 0.01% sodium azide and 0.05% BSA.

Storage

Store at 4°C short term. Aliquot and store at -20°C long term. Avoid freeze / thaw cycle.

Clonality

Monoclonal

Ig Type

Rabbit IgG

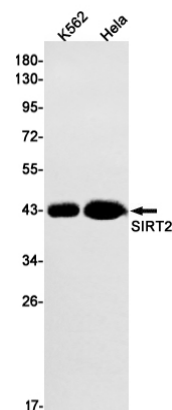
Applications

WB

Dilutions

1:1000

Validations



Western blot detection of SIRT2 in K562, HeLa cell lysates using SIRT2 Rabbit mAb(1:1000 diluted). Predicted band size: 43kDa. Observed band size: 43kDa.