

# Anti-MCM2 (2B3) Mouse antibody



Catalog Number: 168485

## Product name

Anti-MCM2 (2B3) Mouse antibody

## Specificity

Human, Mouse, Rat, Monkey

## Antibody description

MCM2 (2B3) Mouse monoclonal antibody

## Preparation

Antigen: Purified recombinant fragment of human MCM2 expressed in E. Coli.

## Formulation

Ascitic fluid containing 0.03% sodium azide.

## Storage

Store at 4°C short term. Store at -20°C long term. Avoid freeze / thaw cycle.

## Clonality

Monoclonal

## Ig Type

Mouse IgG1

## Applications

WB, IHC-P, FC

## Dilutions

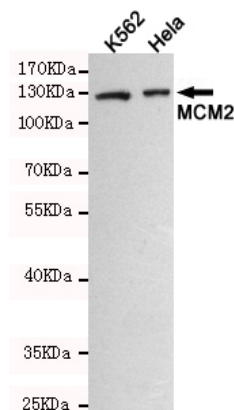
WB: 1/500 - 1/2000

IHC: 1/200 - 1/1000

FC: 1/200 - 1/400

ELISA: 1/10000

## Validations



Western blot detection of MCM2 in K562 and HeLa cell lysates using MCM2 mouse mAb (dilution 1:500). Predicted band size: 125KDa. Observed band size: 125KDa.