

# Anti-eIF2A (2E4F5) Mouse antibody



Catalog Number: 168406

## Product name

Anti-eIF2A (2E4F5) Mouse antibody

## Specificity

Human, Mouse, Rat

## Antibody description

eIF2A (2E4F5) Mouse monoclonal antibody

## Preparation

Antigen: Purified recombinant human eIF2 $\alpha$  protein fragments expressed in E.coli.

## Formulation

PBS(pH 7.4) containing with 0.03% Proclin300 and 50% glycerol.

## Storage

Store at 4°C short term. Store at -20°C long term. Avoid freeze / thaw cycle.

## Clonality

Monoclonal

## Ig Type

IgG2b

## Applications

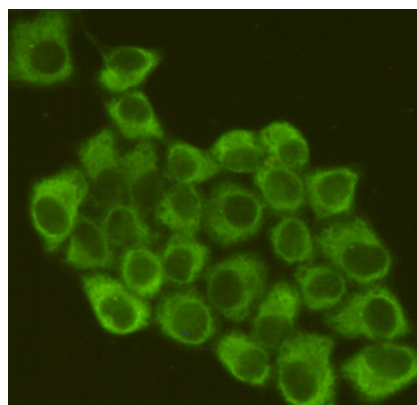
WB, ICC/IF, IP

## Dilutions

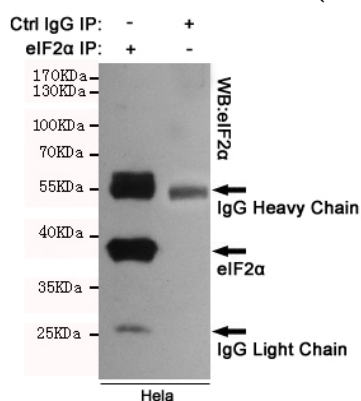
WB: 1/1000

;ICC: 1/200

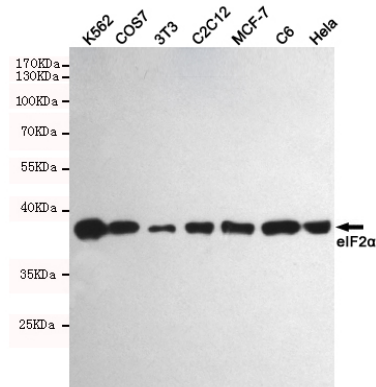
## Validations



Immunofluorescent analysis of HeLa cells fixed by anhydrous methanol for 2 h at -20°C and using anti-eIF2 $\alpha$  mouse mAb (dilution 1:200).



Immunoprecipitation analysis of HeLa cell lysates



using eIF2 $\alpha$ .

Western blot detection of eIF2 $\alpha$  in K562, COS7, 3T3, C2C12, MCF-7, C6 and HeLa cell lysates using eIF2 $\alpha$  mouse mAb (1:1000 diluted). Predicted band size: 38KDa. Observed band size: 38KDa.