

Anti-PP1C gamma (2F2A3) Mouse antibody



Catalog Number: 168383

Product name

Monoclonal

Anti-PP1C gamma (2F2A3) Mouse antibody

Ig Type

Mouse IgG2b

Specificity

Human

Applications

Antibody description

WB

PP1C gamma (2F2A3) Mouse monoclonal antibody

Dilutions

WB: 1/500

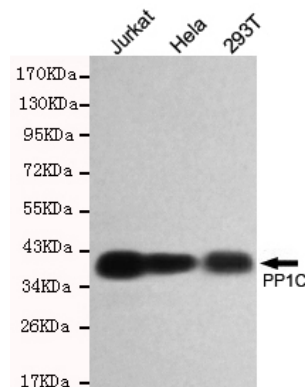
Preparation

Antigen: Purified recombinant human PP1C protein fragments expressed in E.coli.

Validations

Formulation

Purified mouse monoclonal in buffer containing 0.1M Tris-Glycine(pH 7.4 150 mM NaCl)with 0.02% sodium azide 0.1mg/mlBSA and 50% glycerol.



Storage

Store at 4°C short term. Store at -20°C long term. Avoid freeze / thaw cycle.

Western blot detection of PP1C in HeLa,293T and Jurkat cell lysates using PP1C mouse mAb (1:500 diluted).Predicted band size:38KDa.Observed band size:38KDa.

Clonality