

# Anti-Cyclin D2 (6E11) Mouse antibody



Catalog Number: 168375

## Product name

Anti-Cyclin D2 (6E11) Mouse antibody

## Ig Type

Mouse IgG2b

## Specificity

Human

## Applications

WB

## Antibody description

Cyclin D2 (6E11) Mouse monoclonal antibody

## Dilutions

WB: 1/1000

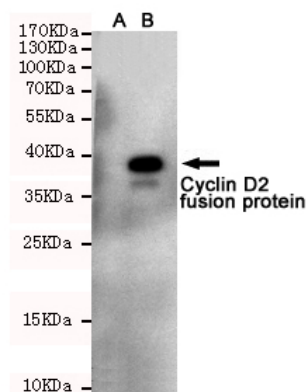
## Preparation

Antigen: Purified recombinant human Cyclin D2 protein fragments expressed in E.coli.

## Validations

## Formulation

Purified mouse monoclonal in PBS(pH 7.4) containing with 0.02% sodium azide and 50% glycerol.



## Storage

Store at 4°C short term. Store at -20°C long term. Avoid freeze / thaw cycle.

Western blot detection of Cyclin D2 in CHO-K1 cell lysateuff08Auff09and CHO-K1 transfected by Cyclin D2-fragment EGFP fusion proteinuff08Buff09cell lysate using Cyclin D2 mouse mAb (1:1000 diluted).Predicted band size:38KDa.Observed band size:38KDa.

## Clonality

Monoclonal