

Anti-WIF1 (1D7) Mouse antibody



Catalog Number: 168365

Product name

ELISA: 1/10000

Anti-WIF1 (1D7) Mouse antibody

Specificity

Human

Antibody description

WIF1 (1D7) Mouse monoclonal antibody

Preparation

Antigen: Purified recombinant fragment of human WIF1 expressed in E. Coli.

Formulation

Ascitic fluid containing 0.03% sodium azide.

Storage

Store at 4°C short term. Store at -20°C long term. Avoid freeze / thaw cycle.

Clonality

Monoclonal

Ig Type

Mouse IgG1

Applications

WB, IHC-P, ICC/IF

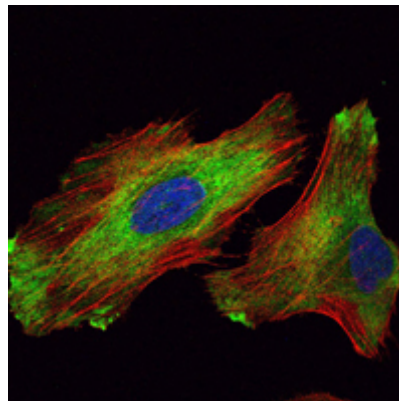
Dilutions

WB: 1/500 - 1/2000

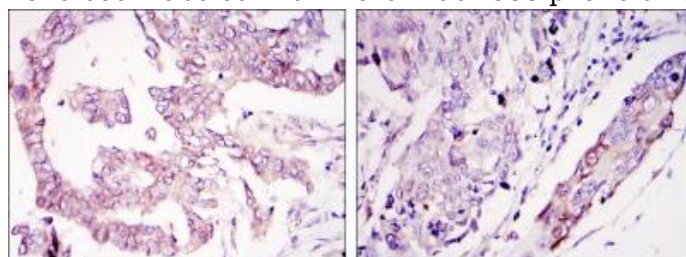
IHC: 1/200 - 1/1000

ICC: 1/200 - 1/1000

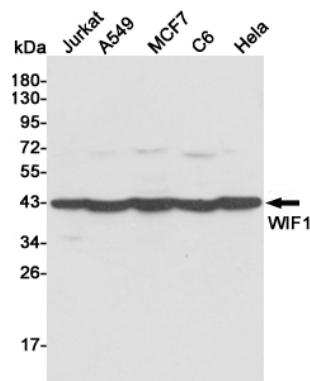
Validations



Immunofluorescence analysis of HeLa cells using WIF1 mouse mAb (green). Red: Actin filaments have been labeled with Alexa Fluor-555 phalloidin.



Immunohistochemical analysis of paraffin-embedded ovary tumour tissues (left) and lung cancer (right) using WIF1 mouse mAb with DAB



staining.

Western blot detection of WIF1 in Jurkat, A549, MCF7, C6 and HeLa cell lysates using WIF1 mouse mAb (1:500 diluted). Predicted band size: 42 kDa. Observed band size: 42 kDa.