

# Anti-MSH2 (1B3) Mouse antibody



Catalog Number: 168361

## Product name

Anti-MSH2 (1B3) Mouse antibody

## Specificity

Human, Monkey

## Antibody description

MSH2 (1B3) Mouse monoclonal antibody

## Preparation

Antigen: Purified recombinant fragment of human MSH2 expressed in E. Coli.

## Formulation

Ascitic fluid containing 0.03% sodium azide.

## Storage

Store at 4°C short term. Store at -20°C long term.  
Avoid freeze / thaw cycle.

## Clonality

Monoclonal

## Ig Type

Mouse IgG1

## Applications

WB, IHC-P, ICC/IF, IP

## Dilutions

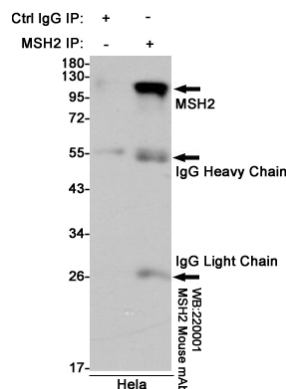
WB: 1/500 - 1/2000

IHC: 1/200 - 1/1000

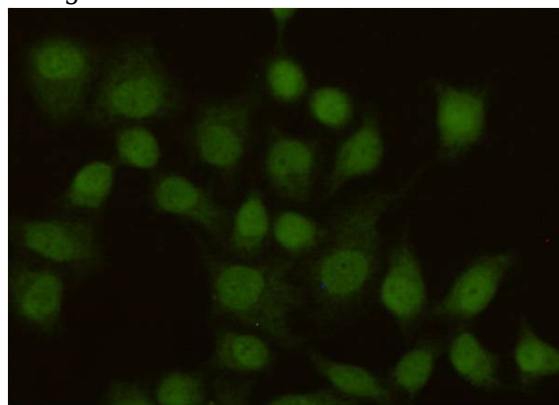
ICC: 1/200 - 1/1000

ELISA: 1/10000

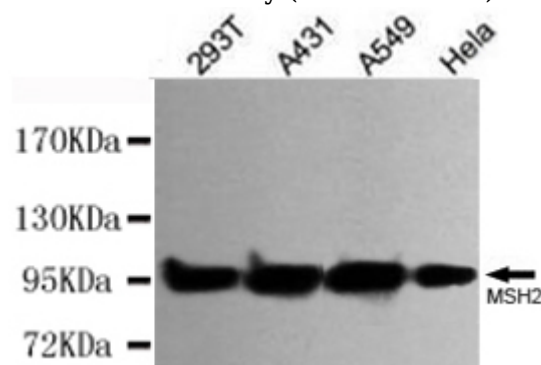
## Validations



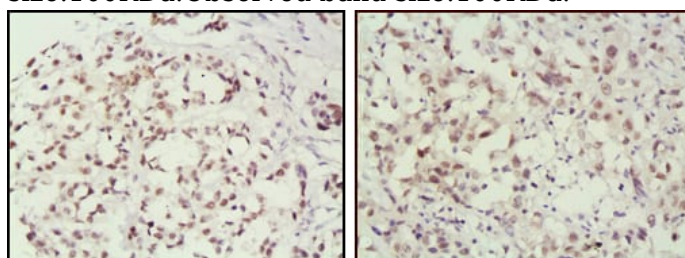
Immunoprecipitation analysis of HeLa cell lysates using MSH2 mouse mAb.



Immunocytochemistry staining of HeLa cells using anti-MSH2 antibody (dilution 1:100).



Western blot detection of MSH2 in HeLa, A431, A549 and 293T cell lysates using MSH2 mouse mAb (1:500 diluted). Predicted band size: 100 kDa. Observed band size: 100 kDa.



# Anti-MSH2 (1B3) Mouse antibody



Catalog Number: 168361

---

Immunohistochemical analysis of paraffin-embedded human breast cancer (left) and lung

cancer (right) tissues using MSH2 mouse mAb with DAB staining, showing nuclear localization.