

Anti-Ubc9/UBE21 (1D6) Mouse antibody



Catalog Number: 168351

Product name

Anti-Ubc9/UBE21 (1D6) Mouse antibody

Specificity

Human, Monkey

Antibody description

Ubc9/UBE21 (1D6) Mouse monoclonal antibody

Preparation

Antigen: Purified recombinant fragment of human UBE2I expressed in E. Coli.

Formulation

Ascitic fluid containing 0.03% sodium azide.

Storage

Store at 4°C short term. Store at -20°C long term. Avoid freeze / thaw cycle.

Clonality

Monoclonal

Ig Type

Mouse IgG1

Applications

WB, IHC-P, ICC/IF, FC

Dilutions

WB: 1/500 - 1/2000

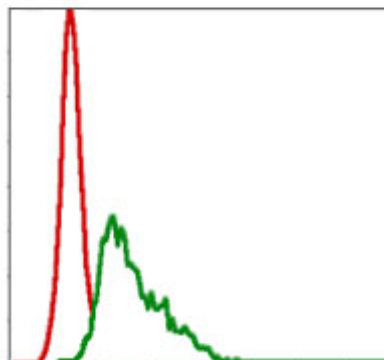
IHC: 1/200 - 1/1000

ICC: 1/200 - 1/1000

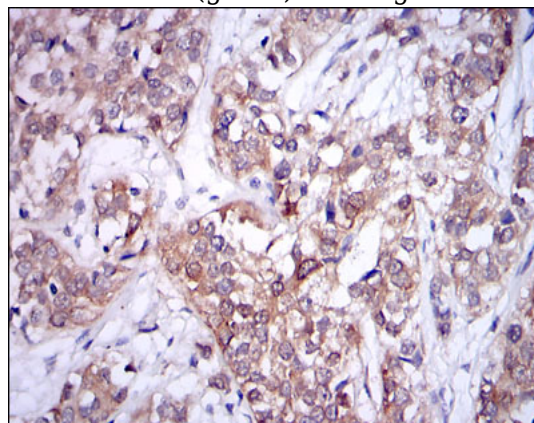
FC: 1/200 - 1/400

ELISA: 1/10000

Validations

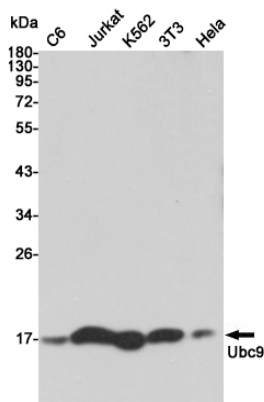


Flow cytometric analysis of HepG2 cells using UBE2I mouse mAb (green) and negative control



(red).

Immunohistochemical analysis of paraffin-embedded bladder cancer tissues using UBE2I mouse mAb with DAB staining.

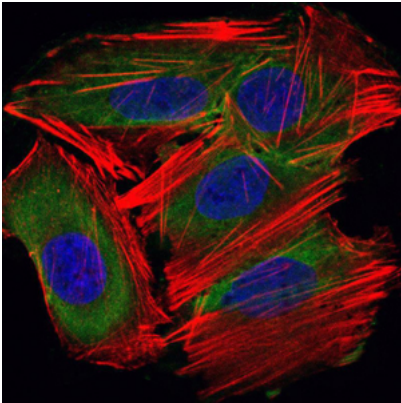


Western blot detection of Ubc9 in C6, Jurkat, K562, 3T3 and HeLa cell lysates using Ubc9 mouse mAb (1:2000 diluted). Predicted band size: 18 kDa. Observed band size: 17 kDa.

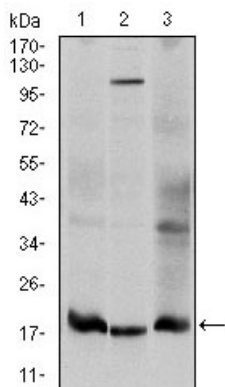
Anti-Ubc9/UBE21 (1D6) Mouse antibody



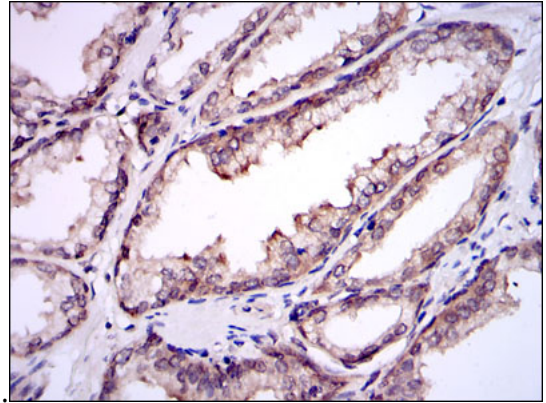
Catalog Number: 168351



Immunofluorescence analysis of HepG2 cells using UBE2I mouse mAb (green). Blue: DRAQ5 fluorescent DNA dye. Red: Actin filaments have been labeled with Alexa Fluor-555 phalloidin.



Western blot analysis using UBE2I mouse mAb against HeLa (1), HepG2 (2), and Cos7 (3) cell



lysate.

Immunohistochemical analysis of paraffin-embedded prostate tissues using UBE2I mouse mAb with DAB staining.