

# Anti-PPM1A (1D2) Mouse antibody



Catalog Number: 168307

## Product name

Anti-PPM1A (1D2) Mouse antibody

## Specificity

Human, Monkey

## Antibody description

PPM1A (1D2) Mouse monoclonal antibody

## Preparation

Antigen: Purified recombinant fragment of human PPM1A (AA: 202-382) expressed in E. Coli.

## Formulation

Purified antibody in PBS with 0.05% sodium azide

## Storage

Store at 4°C short term. Store at -20°C long term. Avoid freeze / thaw cycle.

## Clonality

Monoclonal

## Ig Type

Mouse IgG1

## Applications

WB, FC

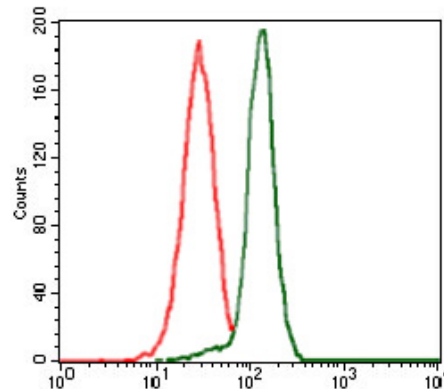
## Dilutions

WB: 1/500 - 1/2000

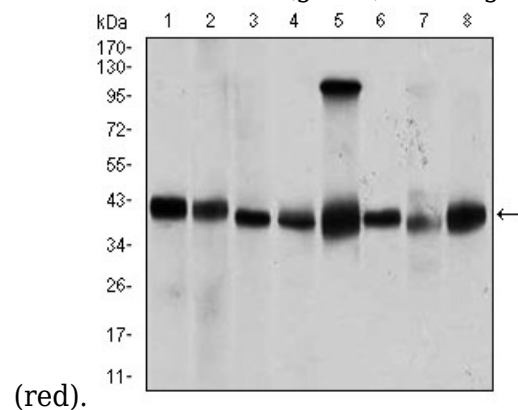
FC: 1/200 - 1/400

ELISA: 1/10000

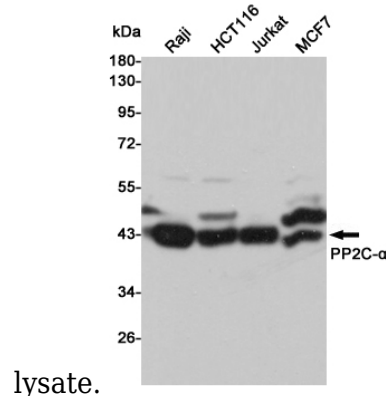
## Validations



Flow cytometric analysis of HeLa cells using PPM1A mouse mAb (green) and negative control



Western blot analysis using PPM1A mouse mAb against Jurkat (1), Jurkat (2), A431 (3), HeLa (4), HEK293 (5), Raji (6), MCF-7 (7), and COS7 (8) cell



lysate. Western blot analysis of extracts from Raji, HCT116, Jurkat and MCF7 cell lysates using PP2C-u03b1 mouse mAb (1:1000 diluted). Predicted band size: 43 kDa. Observed band size: 43 kDa.