

Anti-KLF4 (7F8) Mouse antibody



Catalog Number: 168306

Product name

Anti-KLF4 (7F8) Mouse antibody

Specificity

Human

Antibody description

KLF4 (7F8) Mouse monoclonal antibody

Preparation

Antigen: Purified recombinant fragment of human KLF4 expressed in E. Coli.

Formulation

Ascitic fluid containing 0.03% sodium azide.

Storage

Store at 4°C short term. Store at -20°C long term. Avoid freeze / thaw cycle.

Clonality

Monoclonal

Ig Type

Mouse IgG1

Applications

WB, IHC-P, ICC/IF

Dilutions

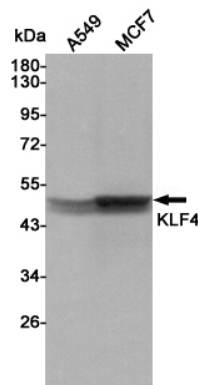
WB: 1/500 - 1/2000

IHC: 1/200 - 1/1000

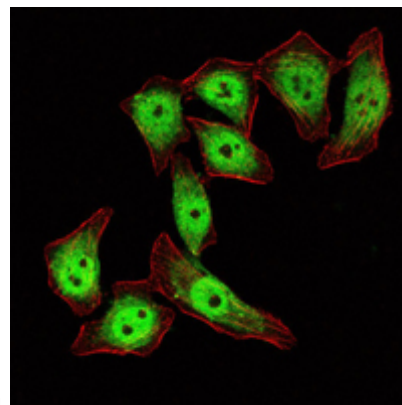
ICC: 1/200 - 1/1000

ELISA: 1/10000

Validations

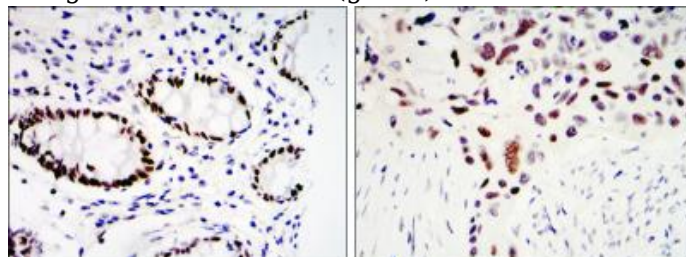


Western blot detection of KLF4 in A549 and MCF7 cell lysates using KLF4 mouse mAb (1:2000 diluted). Predicted band size: 54 kDa. Observed



band size: 50 kDa.

Immunofluorescence analysis of ECA109 cells using KLF4 mouse mAb (green). Red



Immunohistochemical analysis of paraffin-embedded colon cancer tissues (left) and lung cancer tissues (right) using KLF4 mouse mAb with DAB staining