

Anti-CHD3 (7F6) Mouse antibody



Catalog Number: 168252

Product name

Anti-CHD3 (7F6) Mouse antibody

Specificity

Human, Mouse, Rat

Antibody description

CHD3 (7F6) Mouse monoclonal antibody

Preparation

Antigen: Purified recombinant human CHD3 (C-terminus) protein fragments expressed in E.coli.

Formulation

Ascites containing with 0.03% Proclin300 and 50% glycerol.

Storage

Store at 4°C short term. Store at -20°C long term. Avoid freeze / thaw cycle.

Clonality

Monoclonal

Ig Type

Mouse IgG1

Applications

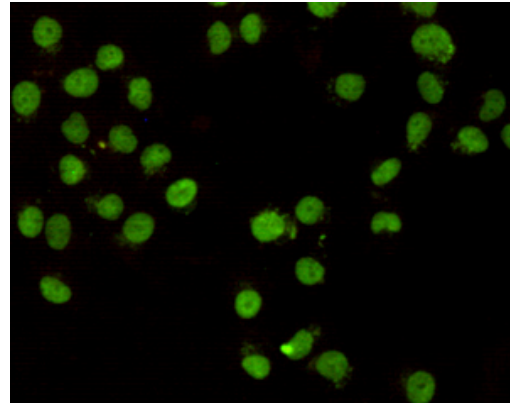
WB, ICC/IF, IP

Dilutions

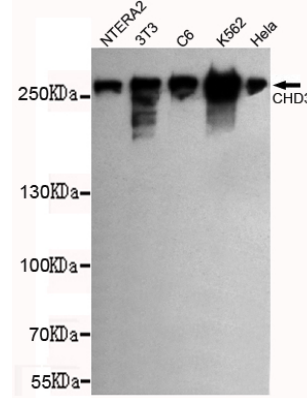
WB: 1/1000

;ICC: 1/400

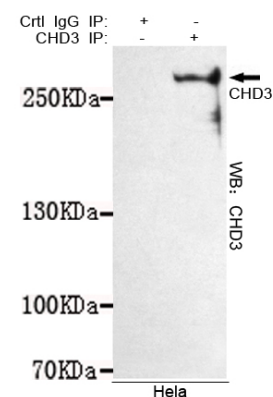
Validations



Immunocytochemistry staining of HeLa cells fixed with -20u2103 Methanol and using CHD3 (C-terminus) mouse mAb (dilution 1:400).



Western blot detection of CHD3 (C-terminus) in NTERA2,3T3,C6,K562 and HeLa cell lysates using CHD3 (C-terminus) mouse mAb (1:1000 diluted). Predicted band size: 260KDa. Observed



band size: 260KDa.

Immunoprecipitation analysis of HeLa cell lysates using CHD3 mouse mAb.