

# Anti-KAP1 (4E1) Mouse antibody



Catalog Number: 168232

## Product name

Anti-KAP1 (4E1) Mouse antibody

## Specificity

Human

## Antibody description

KAP1 (4E1) Mouse monoclonal antibody

## Preparation

Antigen: Purified recombinant human KAP1 / TIF1 beta protein fragments expressed in E.coli.

## Formulation

Purified mouse monoclonal in buffer containing 0.1M Tris-Glycine (pH 7.4 150 mM NaCl) with 0.02% sodium azide 50% glycerol

## Storage

Store at 4°C short term. Store at -20°C long term. Avoid freeze / thaw cycle.

## Clonality

Monoclonal

## Ig Type

IgG1

## Applications

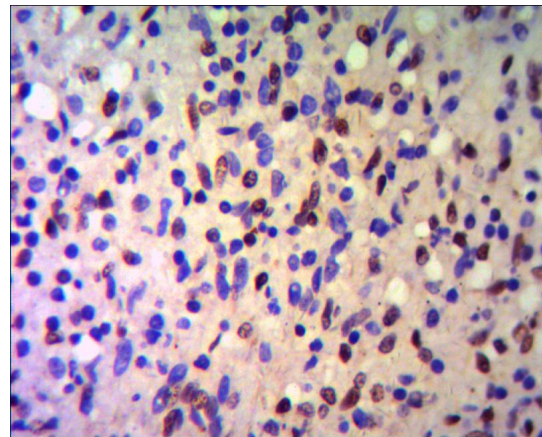
WB, ICC/IF, IHC-P, IP

## Dilutions

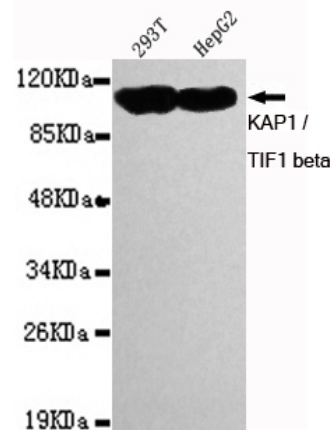
WB: 1/1000

;ICC: 1/100

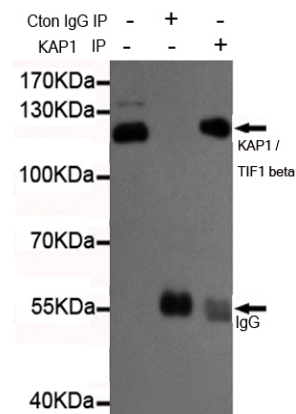
## Validations



IHC of paraffin-embedded human Spleen using anti-KAP1 / TIF1 beta diluted 1/500-1/1000.



Western blot detection of KAP1 / TIF1 beta in 293T and HepG2 cell lysates using KAP1 / TIF1 beta mouse mAb (1:1000 diluted). Observed band



size: 110kDa.

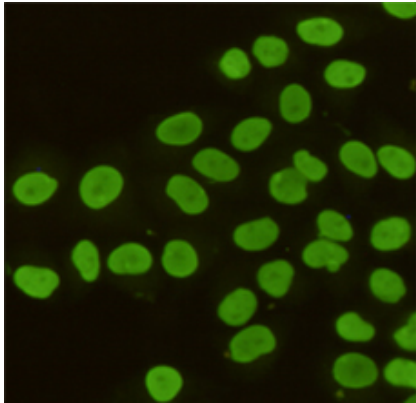
Immunoprecipitation analysis of HeLa cell lysates using KAP1 / TIF1 beta mouse mAb.

# Anti-KAP1 (4E1) Mouse antibody



Catalog Number: 168232

---



Immunocytochemistry staining of HeLa cells fixed with 4% Paraformaldehyde and using anti-KAP1 / TIF1 beta mouse mAb (dilution 1:100).