

Anti-Cyclophilin B (5F10) Mouse antibody



Catalog Number: 168172

Product name

Anti-Cyclophilin B (5F10) Mouse antibody

Specificity

Human, Rat, Mouse

Antibody description

Cyclophilin B (5F10) Mouse monoclonal antibody

Preparation

Antigen: Synthetic peptide conjugated to KLH.

Formulation

PBS(pH 7.4) containing with 0.02% sodium azide and 50% glycerol.

Storage

Store at 4°C short term. Store at -20°C long term. Avoid freeze / thaw cycle.

Clonality

Monoclonal

Ig Type

Mouse IgG1

Applications

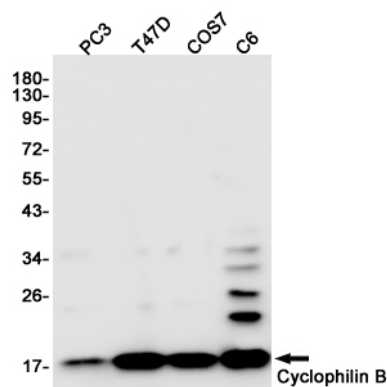
WB, IHC-P

Dilutions

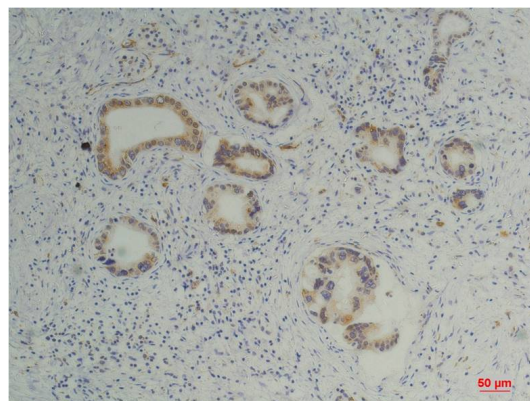
WB: 1/1;000-2;000

IHC: 1/100-200

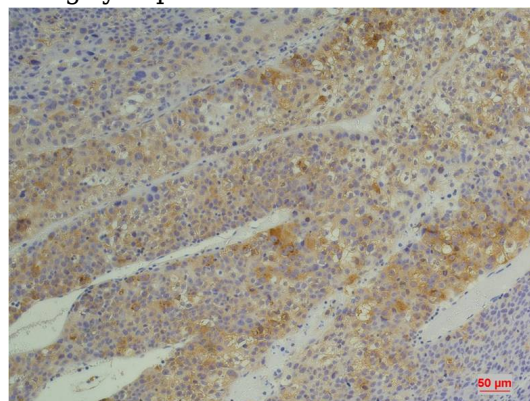
Validations



Western blot detection of Cyclophilin B in PC3,T47D,COS7,C6 cell lysates using Cyclophilin B (6H1) Mouse mAb(1:1000 diluted).Predicted band size:21KDa.Observed band size:21KDa.



Immunohistochemical analysis of paraffin-embedded Human Pancreatic Carcinoma using Cyclophilin B Mouse mAb diluted at 1:200.

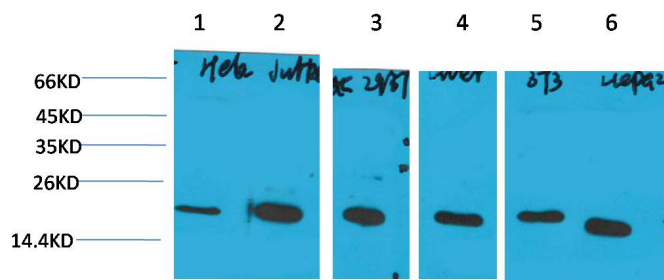


Immunohistochemical analysis of paraffin-embedded Human Hepatocarcinoma using Cyclophilin B Mouse mAb diluted at 1:200.

Anti-Cyclophilin B (5F10) Mouse antibody



Catalog Number: 168172



Western blot analysis of 1) Hela, 2) Jurkat, 3) 293T, 4) Rat Liver Tissue, 5) 3T3, 6) HepG2 with Cyclophilin B Mouse mAb diluted at 1:2,000.