

# Anti-Carcino Embryonic Antigen CEA (2A8) Mouse antibody



Catalog Number: 168152

## Product name

Anti-Carcino Embryonic Antigen CEA (2A8) Mouse antibody

## Specificity

Human

## Antibody description

Carcino Embryonic Antigen CEA (2A8) Mouse monoclonal antibody

## Preparation

Antigen: Synthetic Peptide of Carcinoembryonic Antigen

## Formulation

PBS, pH 7.4, containing 0.02% sodium azide as Preservative and 50% Glycerol.

## Storage

Store at 4°C short term. Store at -20°C long term. Avoid freeze / thaw cycle.

## Clonality

Monoclonal

## Ig Type

IgG1

## Applications

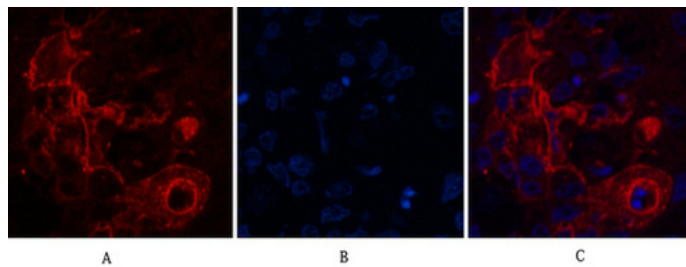
IHC-P, ICC/IF

## Dilutions

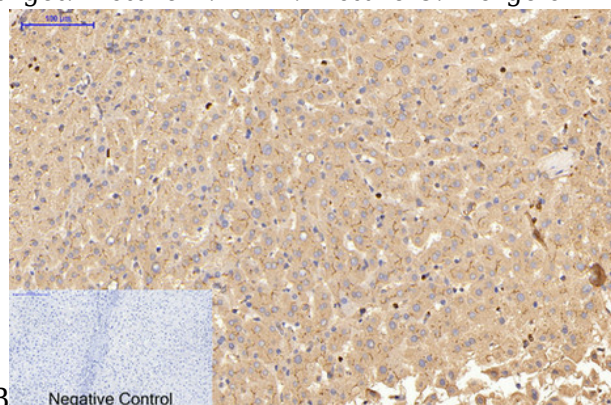
IHC: 1/200

IF: 1/50-200

## Validations

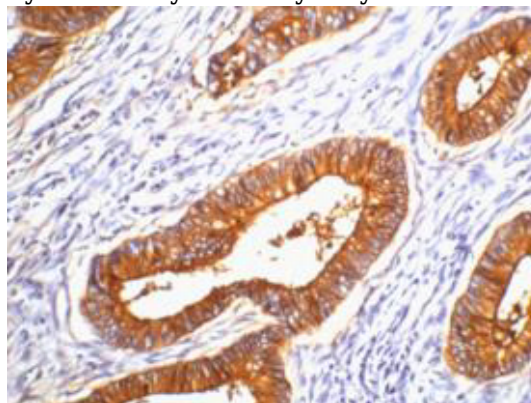


Immunofluorescence analysis of Human-lung-cancer tissue. 1, Carcinoembryonic Antigen Monoclonal Antibody(10E1)(red) was diluted at 1:200(4°C, overnight). 2, Cy3 labeled Secondary antibody was diluted at 1:300(room temperature, 50min). 3, Picture B: DAPI(blue) 10min. Picture A: Target. Picture B: DAPI. Picture C: merge of



Immunohistochemical analysis of paraffin-embedded Human-liver tissue.

1, Carcinoembryonic Antigen Monoclonal Antibody(10E1) was diluted at 1:200(4°C, overnight). 2, Sodium citrate pH 6.0 was used for antibody retrieval(>98°C, 20min). 3, Secondary antibody was diluted at 1:200(room temperature, 30min). Negative control was used by secondary antibody only.



# **Anti-Carcino Embryonic Antigen CEA (2A8) Mouse antibody**



Catalog Number: 168152

---

IHC staining of human colon cancer tissue, diluted at 1:200.