

Anti-phospho-Filamin A (Ser2152)/Filamin B (Ser2107) Rabbit antibody



Catalog Number: 168041

Product name

Anti-phospho-Filamin A (Ser2152)/Filamin B (Ser2107) Rabbit antibody

Specificity

Human

Antibody description

phospho-Filamin A (Ser2152)/Filamin B (Ser2107) Rabbit monoclonal antibody

Preparation

Antigen: A synthetic phosphopeptide corresponding to residues surrounding Ser2152 of human Filamin A

Formulation

50nM Tris-Glycine(pH 7.4), 0.15M NaCl, 40%Glycerol, 0.01% sodium azide and 0.05% BSA

Storage

Store at 4°C short term. Store at -20°C long term. Avoid freeze / thaw cycle.

Clonality

Monoclonal

Ig Type

IgG

Applications

WB, IHC-P, ICC/IF

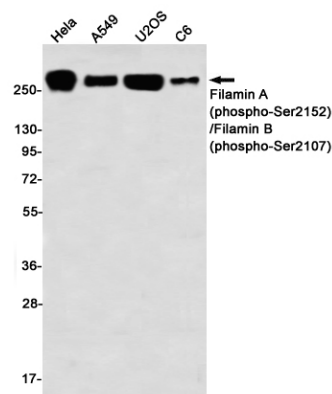
Dilutions

WB: 1/1000-1/5000

IHC: 1/20

ICC/IF: 1/50

Validations



Western blot detection of Filamin A (phospho-Ser2152)/Filamin B (phospho-Ser2107) in HeLa, A549, U2OS, C6 using Filamin A (phospho-Ser2152)/Filamin B (phospho-Ser2107) Rabbit mAb(1:1000 diluted)