

Anti-YTHDC2 Rabbit antibody



Catalog Number: 168034

Product name

Anti-YTHDC2 Rabbit antibody

Specificity

Human, Mouse, Rat

Antibody description

YTHDC2 Rabbit monoclonal antibody

Preparation

Antigen: Recombinant protein of human YTHDC2

Formulation

50nM Tris-Glycine(pH 7.4), 0.15M NaCl,
40%Glycerol, 0.01% sodium azide and 0.05% BSA

Storage

Store at 4°C short term. Store at -20°C long term.
Avoid freeze / thaw cycle.

Clonality

Monoclonal

Ig Type

IgG

Applications

WB, IHC-P, FC, IP

Dilutions

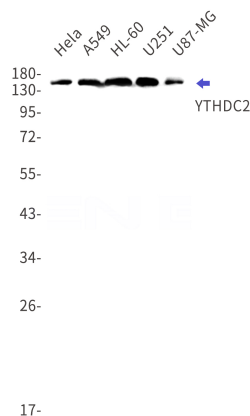
WB: 1/1000

IHC: 1/50

FC: 1/50

IP: 1/20

Validations



Western blot detection of YTHDC2 in HeLa, A549, HL-60, U251, U87-MG cell lysates using YTHDC2 Rabbit mAb(1:1000 diluted). Predicted band size: 160kDa. Observed band size: 160kDa.