

Anti-Superoxide Dismutase 1 Rabbit antibody



Catalog Number: 167988

Product name

Anti-Superoxide Dismutase 1 Rabbit antibody

Specificity

Human

Antibody description

Superoxide Dismutase 1 Rabbit monoclonal antibody

Preparation

Antigen: Recombinant protein of human Superoxide Dismutase 1

Formulation

50nM Tris-Glycine(pH 7.4), 0.15M NaCl, 40%Glycerol, 0.01% sodium azide and 0.05% BSA

Storage

Store at 4°C short term. Store at -20°C long term. Avoid freeze / thaw cycle.

Clonality

Monoclonal

Ig Type

IgG

Applications

WB, IHC-P, ICC/IF, FC

Dilutions

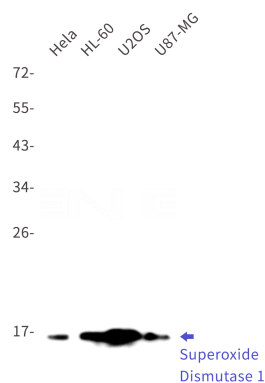
WB: 1/1000

IHC: 1/500

ICC/IF: 1/20

FC: 1/50

Validations



Western blot detection of Superoxide Dismutase 1 in HeLa,HL-60,U2OS,U87-MG cell lysates using Superoxide Dismutase 1 Rabbit mAb(1:1000 diluted).Predicted band size:16kDa.Observed band size:16kDa.