

# Anti-RCC1 Rabbit antibody



Catalog Number: 167985

## Product name

Anti-RCC1 Rabbit antibody

## Specificity

Human, Mouse, Rat

## Antibody description

RCC1 Rabbit monoclonal antibody

## Preparation

Antigen: A synthetic peptide of human RCC1

## Formulation

50nM Tris-Glycine(pH 7.4), 0.15M NaCl,  
40%Glycerol, 0.01% sodium azide and 0.05% BSA

## Storage

Store at 4°C short term. Store at -20°C long term.  
Avoid freeze / thaw cycle.

## Clonality

Monoclonal

## Ig Type

Rabbit IgG

## Applications

WB, IHC-P, ICC/IF, FC, IP

## Dilutions

WB: 1/1000

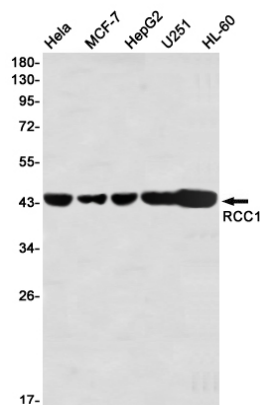
IHC: 1/50

ICC/IF: 1/50-1/200

FC: 1/200

IP: 1/20

## Validations



Western blot detection of RCC1 in HeLa, MCF-7, HepG2, U251, HL-60 using RCC1 Rabbit mAb(1:1000 diluted)