

# Anti-phospho-MCM2 (Ser27) Rabbit antibody



Catalog Number: 167964

## Product name

Anti-phospho-MCM2 (Ser27) Rabbit antibody

## Specificity

Human, Mouse, Rat

## Antibody description

phospho-MCM2 (Ser27) Rabbit monoclonal antibody

## Preparation

Antigen: A synthetic phosphopeptide corresponding to residues surrounding Ser27 of human MCM2

## Formulation

50nM Tris-Glycine(pH 7.4), 0.15M NaCl, 40%Glycerol, 0.01% sodium azide and 0.05% BSA

## Storage

Store at 4°C short term. Store at -20°C long term. Avoid freeze / thaw cycle.

## Clonality

Monoclonal

## Ig Type

IgG

## Applications

WB, IHC-P, ICC/IF, IP

## Dilutions

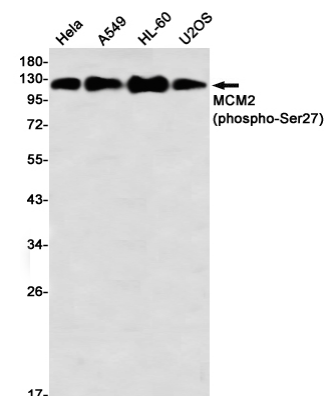
WB: 1/2000-1/10000

IHC: 1/50

ICC/IF: 1/50

IP: 1/20

## Validations



Western blot detection of MCM2 (phospho-Ser27) in HeLa,A549,HL-60,U2OS using MCM2 (phospho-Ser27) Rabbit mAb(1:1000 diluted)