

Anti-phospho-PKC alpha (Ser657) Rabbit antibody



Catalog Number: 167961

Product name

Monoclonal

Anti-phospho-PKC alpha (Ser657) Rabbit antibody

Ig Type

Rabbit IgG

Specificity

Human, Mouse, Rat

Applications

WB, IHC-P

Antibody description

phospho-PKC alpha (Ser657) Rabbit monoclonal antibody

Dilutions

WB: 1/1000

Preparation

IHC: 1/200

Antigen: A synthetic phosphopeptide corresponding to residues surrounding Ser657 of human PKC alpha

Validations

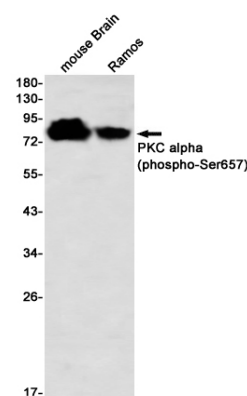
Formulation

50nM Tris-Glycine(pH 7.4), 0.15M NaCl, 40%Glycerol, 0.01% sodium azide and 0.05% BSA

Storage

Store at 4°C short term. Store at -20°C long term. Avoid freeze / thaw cycle.

Clonality



Western blot detection of PKC alpha (phospho-Ser657) in mouse Brain,Ramos using PKC alpha (phospho-Ser657) Rabbit mAb(1:1000 diluted)