

Anti-CSDE1/NRU Rabbit antibody



Catalog Number: 167936

Product name

Anti-CSDE1/NRU Rabbit antibody

Specificity

Human, Mouse, Rat

Antibody description

CSDE1/NRU Rabbit monoclonal antibody

Preparation

Antigen: A synthetic peptide of human CSDE1/NRU

Formulation

50nM Tris-Glycine(pH 7.4), 0.15M NaCl, 40%Glycerol, 0.01% sodium azide and 0.05% BSA

Storage

Store at 4°C short term. Store at -20°C long term. Avoid freeze / thaw cycle.

Clonality

Monoclonal

Ig Type

IgG

Applications

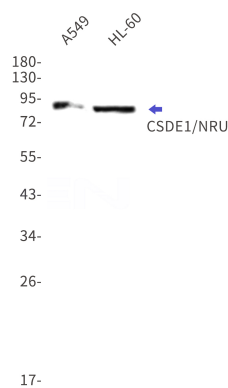
WB, IP

Dilutions

WB: 1/1000

IP: 1/20

Validations



Western blot detection of CSDE1/NRU in A549,HL-60 cell lysates using CSDE1/NRU Rabbit mAb(1:1000 diluted).Predicted band size:89kDa.Observed band size:89kDa.