

Anti-phospho-GATA3 (Ser308) Rabbit antibody



Catalog Number: 167893

Product name

Rabbit IgG

Anti-phospho-GATA3 (Ser308) Rabbit antibody

Applications

Specificity

WB, IHC-P, IP

Human

Dilutions

Antibody description

WB: 1/2000

phospho-GATA3 (Ser308) Rabbit monoclonal antibody

IHC: 1/20

Preparation

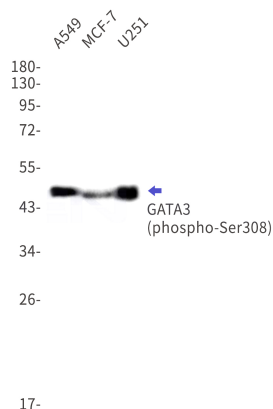
IP: 1/20

Antigen: A synthetic phosphopeptide corresponding to residues surrounding Ser308 of human GATA3

Validations

Formulation

50nM Tris-Glycine(pH 7.4), 0.15M NaCl, 40%Glycerol, 0.01% sodium azide and 0.05% BSA



Storage

Store at 4°C short term. Store at -20°C long term. Avoid freeze / thaw cycle.

Clonality

Monoclonal

Western blot detection of phospho-GATA3 (Ser308) in A549, MCF-7, U251 cell lysates using phospho-GATA3(Ser308) Rabbit mAb(1:1000 diluted). Predicted band size: 48kDa. Observed band size: 48kDa.

Ig Type