

Anti-Cyclin A1/A2 Rabbit antibody



Catalog Number: 167871

Product name

Rabbit IgG

Anti-Cyclin A1/A2 Rabbit antibody

Applications

Specificity

WB, IHC-P, IP

Human

Dilutions

Antibody description

WB: 1/500-1/1000

Cyclin A1/A2 Rabbit monoclonal antibody

IHC: 1/100-1/500

Preparation

IP: 1/50

Antigen: A synthesized peptide derived from human Cyclin A1/A2

Validations

Formulation

Rabbit IgG in phosphate buffered saline , pH 7.4, 150mM NaCl, 0.02% sodium azide and 50% glycerol.

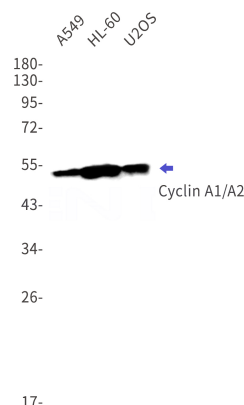
Storage

Store at 4°C short term. Store at -20°C long term. Avoid freeze / thaw cycle.

Clonality

Monoclonal

Ig Type



Western blot detection of Cyclin A1/A2 in A549,HL-60,U2OS cell lysates using Cyclin A1/A2 Rabbit mAb(1:1000 diluted).Observed band size:52,49kDa.