

Anti-muscle Actin Rabbit antibody



Catalog Number: 167868

Product name

IgG

Anti-muscle Actin Rabbit antibody

Applications

Specificity

WB, IHC-P, ICC/IF, FC, IP

Human, Mouse, Rat

Dilutions

Antibody description

WB: 1/1000

muscle Actin Rabbit monoclonal antibody

IHC: 1/201/50

Preparation

FC: 1/20

Antigen: A synthetic peptide of human muscle Actin

IP: 1/20

Formulation

50nM Tris-Glycine(pH 7.4), 0.15M NaCl,
40%Glycerol, 0.01% sodium azide and 0.05% BSA

Storage

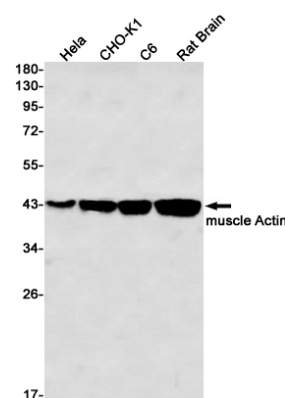
Store at 4°C short term. Store at -20°C long term.
Avoid freeze / thaw cycle.

Clonality

Monoclonal

Ig Type

Validations



Western blot detection of muscle Actin in HeLa, CHO-K1, C6, Rat Brain lysates using muscle Actin Rabbit mAb(1:1000 diluted). Predicted band size: 42kDa. Observed band size: 42kDa.