

Anti-SARA Rabbit antibody



Catalog Number: 167865

Product name

Anti-SARA Rabbit antibody

Specificity

Human, Rat

Antibody description

SARA Rabbit monoclonal antibody

Preparation

Antigen: A synthetic peptide of human SARA

Formulation

50nM Tris-Glycine(pH 7.4), 0.15M NaCl,
40%Glycerol, 0.01% sodium azide and 0.05% BSA

Storage

Store at 4°C short term. Store at -20°C long term.
Avoid freeze / thaw cycle.

Clonality

Monoclonal

Ig Type

IgG

Applications

WB, IHC-P, FC, IP

Dilutions

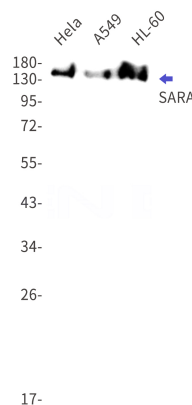
WB: 1/2000-1/10000

IHC: 1/50

FC: 1/20

IP: 1/20

Validations



Western blot detection of SARA in HeLa, A549, HL-60 cell lysates using SARA Rabbit mAb(1:1000 diluted). Predicted band size: 156kDa. Observed band size: 156kDa.